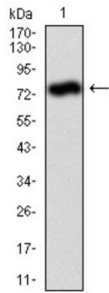
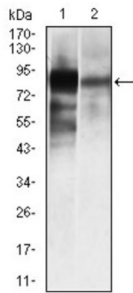


# Alkaline Phosphatase, Tissue-Nonspecific Isozyme (ALPL) Antibody

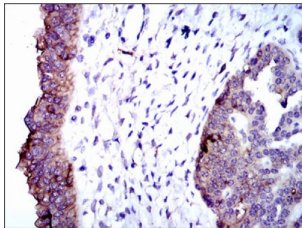
Catalogue No.: abx011924



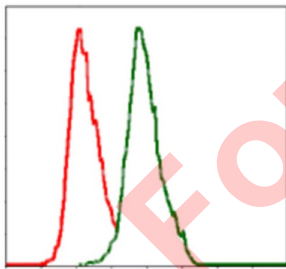
Western blot analysis using ALPL antibody against human ALPL (AA: 18-502) recombinant protein. (Expected MW is 78.9 kDa).



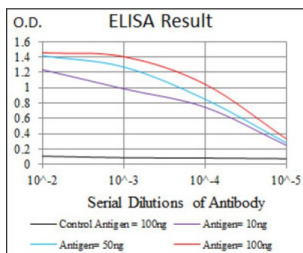
Western blot analysis using ALPL antibody against HeLa (1), and NTERA-2 (4) cell lysate.



Immunohistochemical analysis of paraffin-embedded ovarian cancer tissues using ALPL antibody with DAB staining.



Flow cytometric analysis of MCF-7 cells using ALPL antibody (green) and negative control (red).



Red: Control Antigen (100ng) ; Purple: Antigen (10ng) ; Green: Antigen (50ng) ; Blue: Antigen (100ng).

# Datasheet

Version: 2.0.0  
Revision date: 25 Nov 2024



There are at least four distinct but related alkaline phosphatases: intestinal, placental, placental-like, and liver/bone/kidney (tissue non-specific). The first three are located together on chromosome 2, while the tissue non-specific form is located on chromosome 1. The product of this gene is a membrane bound glycosylated enzyme that is not expressed in any particular tissue and is, therefore, referred to as the tissue-nonspecific form of the enzyme.

<b>Target:</b>	Alkaline Phosphatase, Tissue-Nonspecific Isozyme (ALPL)
<b>Clonality:</b>	Monoclonal
<b>Reactivity:</b>	Human
<b>Tested Applications:</b>	ELISA, WB, IHC, FCM
<b>Host:</b>	Mouse
<b>Recommended dilutions:</b>	ELISA: 1/10000, WB: 1/500 - 1/2000, IHC: 1/200 - 1/1000, FCM: 1/200 - 1/400. Optimal dilutions/concentrations should be determined by the end user.
<b>Conjugation:</b>	Unconjugated
<b>Immunogen:</b>	Purified recombinant fragment of human ALPL expressed in E. coli.
<b>Isotype:</b>	IgG <sub>1</sub>
<b>Form:</b>	Liquid
<b>Purification:</b>	Purified from ascites by Protein G chromatography.
<b>Storage:</b>	Aliquot and store at -20°C. Avoid repeated freeze/thaw cycles.
<b>UniProt Primary AC:</b>	P05186 ( <a href="#">UniProt</a> , <a href="#">ExpASY</a> )
<b>Gene Symbol:</b>	ALPL
<b>GeneID:</b>	<a href="#">249</a>
<b>OMIM:</b>	<a href="#">146300</a>
<b>HGNC:</b>	438
<b>KEGG:</b>	hsa:249
<b>Ensembl:</b>	ENSG00000162551
<b>String:</b>	<a href="#">9606.ENSP00000363973</a>

# Datasheet

Version: 2.0.0  
Revision date: 25 Nov 2024



**Molecular Weight:** 57.3 kDa

**Buffer:** PBS, containing 0.05% sodium azide.

**Concentration:** 1 mg/ml

**Note:** This product is for research use only.

For Reference Only