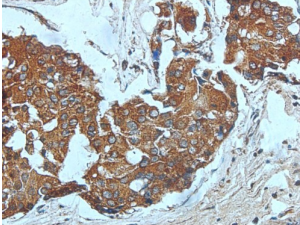
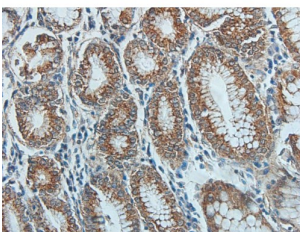


## Receptor Tyrosine-Protein Kinase ErbB-2 (ERBB2) Antibody

Catalogue No.: abx012001



IHC-P analysis of human breast cancer tissue, using ERBB2 antibody (1/200 dilution).



IHC-P analysis of human stomach tissue, using ERBB2 antibody (1/200 dilution).

Receptor Tyrosine-Protein Kinase ErbB-2 (ERBB2) Antibody is a Mouse Monoclonal antibody against Human Receptor Tyrosine-Protein Kinase ErbB-2 (ERBB2).

**Target:** Receptor Tyrosine-Protein Kinase ErbB-2 (ERBB2)

**Clonality:** Monoclonal

**Reactivity:** Human

**Tested Applications:** ELISA, IHC

**Host:** Mouse

**Recommended dilutions:** IHC: 1/200 - 1/400. Optimal dilutions/concentrations should be determined by the end user.

**Conjugation:** Unconjugated

**Immunogen:** Recombinant protein corresponding to full-length Human ERBB2.

**Isotype:** IgG<sub>1</sub>

**Form:** Liquid

# Datasheet

Version: 3.0.0  
Revision date: 02 Mar 2025



<b>Purification:</b>	Purified from mouse ascites by Protein G chromatography.
<b>Storage:</b>	Aliquot and store at -20°C. Avoid repeated freeze/thaw cycles.
<b>UniProt Primary AC:</b>	P04626 ( <a href="#">UniProt</a> , <a href="#">ExPASy</a> )
<b>Gene Symbol:</b>	ERBB2
<b>GeneID:</b>	<a href="#">2064</a>
<b>KEGG:</b>	hsa:2064
<b>String:</b>	<a href="#">9606.ENSP00000269571</a>
<b>Buffer:</b>	PBS, pH 7.4, containing 0.02% sodium azide and 50% glycerol.
<b>Concentration:</b>	1 mg/ml
<b>Note:</b>	THIS PRODUCT IS FOR RESEARCH USE ONLY. NOT FOR USE IN DIAGNOSTIC, THERAPEUTIC OR COSMETIC PROCEDURES. NOT FOR HUMAN OR ANIMAL CONSUMPTION.

For Reference Only