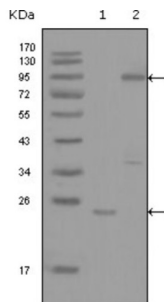


## Tyrosine-Protein Kinase Yes (YES1) Antibody

Catalogue No.: abx012199



Western blot analysis using YES1 antibody against truncated YES1-His recombinant protein (1) and full-length GFP-YES1 (aa1-543) transfected COS7 cell lysate (2).

This gene is the cellular homolog of the Yamaguchi sarcoma virus oncogene. The encoded protein has tyrosine kinase activity and belongs to the src family of proteins. This gene lies in close proximity to thymidylate synthase gene on chromosome 18, and a corresponding pseudogene has been found on chromosome 22.

|                               |  |
|-------------------------------|--|
| <b>Target:</b>                | Tyrosine-Protein Kinase Yes (YES1)   |
| <b>Clonality:</b>             | Monoclonal   |
| <b>Reactivity:</b>            | Human  |
| <b>Tested Applications:</b>   | ELISA  |
| <b>Host:</b>                  | Mouse  |
| <b>Recommended dilutions:</b> | ELISA: 1/10000. Optimal dilutions/concentrations should be determined by the end user. |
| <b>Conjugation:</b>           | Unconjugated   |
| <b>Immunogen:</b>             | Purified recombinant fragment of YES1 (aa10-193) expressed in E. coli.                 |
| <b>Isotype:</b>               | IgG <sub>1</sub>   |
| <b>Form:</b>                  | Liquid   |
| <b>Purification:</b>          | Unpurified ascites.  |
| <b>Storage:</b>               | Aliquot and store at -20°C. Avoid repeated freeze/thaw cycles.                         |
| <b>UniProt Primary AC:</b>    | P07947 ( <a href="#">UniProt</a> , <a href="#">ExPASy</a> )                            |
| <b>Gene Symbol:</b>           | YES1   |

# Datasheet

Version: 1.0.0  
Revision date: 15 Nov 2024



**GeneID:** [7525](#)

**OMIM:** [164880](#)

**HGNC:** 12841

**KEGG:** hsa:7525

**Ensembl:** ENSG00000176105

**String:** [9606.ENSP00000462468](#)

**Enzyme Commission Number:** EC 2.7.10.2

**Molecular Weight:** 61 kDa

**Buffer:** Ascitic fluid containing 0.03% sodium azide.

**Concentration:** Not determined.

**Note:** This product is for research use only.

For Reference Only