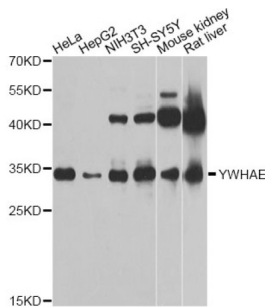


14-3-3 Protein Epsilon (YWHAE) Antibody

Catalogue No.: abx000981



Western blot analysis of extracts of various cell lines, using YWHAE Antibody (abx000981) at 1/1000 dilution.

YWHAE Antibody is a Rabbit Polyclonal antibody against YWHAE. This gene product belongs to the 14-3-3 family of proteins which mediate signal transduction by binding to phosphoserine-containing proteins. This highly conserved protein family is found in both plants and mammals, and this protein is 100% identical to the mouse ortholog. It interacts with CDC25 phosphatases, RAF1 and IRS1 proteins, suggesting its role in diverse biochemical activities related to signal transduction, such as cell division and regulation of insulin sensitivity. It has also been implicated in the pathogenesis of small cell lung cancer. Two transcript variants, one protein-coding and the other non-protein-coding, have been found for this gene.

Target:	14-3-3 Protein Epsilon (YWHAE)
Clonality:	Polyclonal
Reactivity:	Human, Mouse, Rat
Tested Applications:	WB, IF/ICC
Host:	Rabbit
Recommended dilutions:	WB: 1/500 - 1/2000, IF/ICC: 1/50 - 1/200. Optimal dilutions/concentrations should be determined by the end user.
Conjugation:	Unconjugated
Immunogen:	Recombinant fusion protein containing a sequence corresponding to amino acids 73-163 of human 14-3-3 epsilon.
Isotype:	IgG
Form:	Liquid
Purification:	Purified by affinity chromatography.
Storage:	Aliquot and store at -20°C. Avoid repeated freeze/thaw cycles.
UniProt Primary AC:	P62258 (UniProt , ExPASy)

Datasheet

Version: 3.0.0
Revision date: 21 Nov 2024



Gene Symbol: YWHAE

GeneID: [7531](#)

NCBI Accession: NP_006752.1

KEGG: hsa:7531

String: [9606.ENSP00000264335](#)

Molecular Weight: Calculated MW: 29 kDa
Observed MW: 29-32 kDa

Buffer: PBS, pH 7.3, containing 0.09% sodium azide, 50% glycerol.

Concentration: > 0.2 mg/ml

Note: This product is for research use only.

For Reference Only