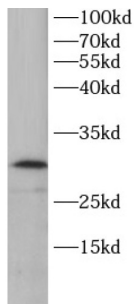
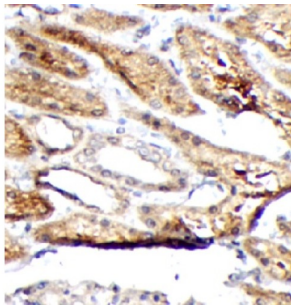


## Thymidine Kinase (KITH) Antibody

Catalogue No.: abx012257



WB analysis of HEK293 cell lysates, using TK1 antibody (1/1000 dilution).



IHC-P analysis of human kidney tissue, using TK1 antibody (1/100 dilution).

Thymidine Kinase (KITH) Antibody is a Rabbit Polyclonal antibody for the detection of TK1.

TK1 (Thymidine kinase, cytosolic) belongs to the thymidine kinase family and is a regulatory enzyme that can interchange between its dimeric and tetrameric forms, which have low and high catalytic efficiencies, respectively. TK1 is involved in DNA synthesis and an important proliferation marker (PMID:21178264).

<b>Target:</b>	Thymidine Kinase (KITH)
<b>Clonality:</b>	Polyclonal
<b>Reactivity:</b>	Human
<b>Tested Applications:</b>	ELISA, WB, IHC, IF/ICC
<b>Host:</b>	Rabbit
<b>Recommended dilutions:</b>	WB: 1/200 - 1/2000, IHC: 1/20 - 1/200, IF/ICC: 1/20 - 1/200. Optimal dilutions/concentrations should be determined by the end user.
<b>Conjugation:</b>	Unconjugated
<b>Immunogen:</b>	thymidine kinase 1, soluble
<b>Isotype:</b>	IgG

# Datasheet

Version: 1.0.0  
Revision date: 14 Jan 2025



<b>Form:</b>	Liquid
<b>Purity:</b>	≥ 95% (SDS-PAGE)
<b>Purification:</b>	Purified by immunogen affinity chromatography.
<b>Storage:</b>	Aliquot and store at -20°C. Avoid repeated freeze/thaw cycles.
<b>Validity:</b>	12 months.
<b>UniProt Primary AC:</b>	P04183 ( <a href="#">UniProt</a> , <a href="#">ExPASy</a> )
<b>Gene Symbol:</b>	TK1
<b>GeneID:</b>	<a href="#">7083</a>
<b>OMIM:</b>	<a href="#">188300</a>
<b>HGNC:</b>	11830
<b>KEGG:</b>	hsa:7083
<b>Ensembl:</b>	ENSG00000167900
<b>String:</b>	<a href="#">9606.ENSP00000301634</a>
<b>Enzyme Commission Number:</b>	EC 2.7.1.21
<b>Molecular Weight:</b>	Observed MW: 30 kDa
<b>Buffer:</b>	PBS, pH 7.3, with 0.02% sodium azide and 50% glycerol.
<b>Concentration:</b>	2 mg/ml
<b>Note:</b>	This product is for research use only.