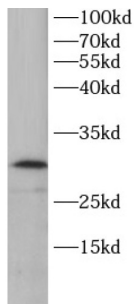
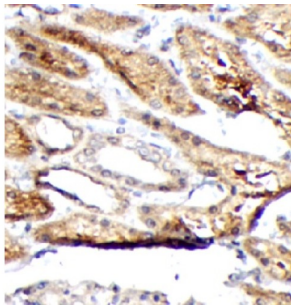


Thymidine Kinase (KITH) Antibody

Catalogue No.: abx012257



WB analysis of HEK293 cell lysates, using TK1 antibody (1/1000 dilution).



IHC-P analysis of human kidney tissue, using TK1 antibody (1/100 dilution).

Thymidine Kinase (KITH) Antibody is a Rabbit Polyclonal antibody for the detection of TK1.

TK1 (Thymidine kinase, cytosolic) belongs to the thymidine kinase family and is a regulatory enzyme that can interchange between its dimeric and tetrameric forms, which have low and high catalytic efficiencies, respectively. TK1 is involved in DNA synthesis and an important proliferation marker (PMID:21178264).

Target:	Thymidine Kinase (KITH)
Clonality:	Polyclonal
Reactivity:	Human
Tested Applications:	ELISA, WB, IHC, IF/ICC
Host:	Rabbit
Recommended dilutions:	WB: 1/200 - 1/2000, IHC: 1/20 - 1/200, IF/ICC: 1/20 - 1/200. Optimal dilutions/concentrations should be determined by the end user.
Conjugation:	Unconjugated
Immunogen:	thymidine kinase 1, soluble
Isotype:	IgG

Datasheet

Version: 2.0.0
Revision date: 12 Mar 2025



Form:	Liquid
Purity:	≥ 95% (SDS-PAGE)
Purification:	Purified by immunogen affinity chromatography.
Storage:	Aliquot and store at -20°C. Avoid repeated freeze/thaw cycles.
Validity:	12 months.
UniProt Primary AC:	P04183 (UniProt , ExPASy)
Gene Symbol:	TK1
GeneID:	7083
OMIM:	188300
HGNC:	11830
KEGG:	hsa:7083
Ensembl:	ENSG00000167900
String:	9606.ENSP00000301634
Enzyme Commission Number:	EC 2.7.1.21
Molecular Weight:	Observed MW: 30 kDa
Buffer:	PBS, pH 7.3, with 0.02% sodium azide and 50% glycerol.
Concentration:	2 mg/ml
Note:	THIS PRODUCT IS FOR RESEARCH USE ONLY. NOT FOR USE IN DIAGNOSTIC, THERAPEUTIC OR COSMETIC PROCEDURES. NOT FOR HUMAN OR ANIMAL CONSUMPTION.