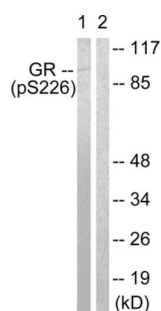
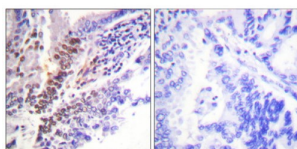


Glucocorticoid Receptor Phospho-Ser226 (NR3C1 pS226) Antibody

Catalogue No.: abx012430



Western blot analysis of extracts from Jurkat cells, treated with EGF (200 ng/ml, 15 mins), using GR (Phospho-Ser226) antibody. The lane on the right is blocked with the phosphopeptide.



Immunohistochemical analysis of paraffin-embedded human lung carcinoma tissue using GR (Phospho-Ser226) antibody. The picture on the right is blocked with the phosphopeptide.

Rabbit polyclonal antibody against GR protein phosphorylated at S226 (Human), S234 (Mouse), S246 (Rat).

Target:	Glucocorticoid Receptor Phospho-Ser226 (NR3C1 pS226)
Clonality:	Polyclonal
Reactivity:	Human, Mouse, Rat
Tested Applications:	ELISA, WB, IHC
Host:	Rabbit
Recommended dilutions:	ELISA: 1/5000, WB: 1/500 - 1/3000, IHC: 1/50 - 1/100. Optimal dilutions/concentrations should be determined by the end user.
Conjugation:	Unconjugated
Immunogen:	The antiserum was produced against synthesized phosphopeptide derived from human GR around the phosphorylation site of serine 226 (L-L-SP-P-L).
Isotype:	IgG
Form:	Liquid

Datasheet

Version: 3.0.0
Revision date: 12 Mar 2025



Purification:	Purified from rabbit antiserum by affinity chromatography using epitope-specific phosphopeptide. The antibody against non-phosphopeptide was removed by chromatography using non-phosphopeptide corresponding to the phosphorylation site.
Storage:	Aliquot and store at -20°C. Avoid repeated freeze/thaw cycles.
UniProt Primary AC:	P04150 (UniProt , ExPASy)
String:	9606.ENSP00000231509
Sequence:	LLSPLAGEDDC
Buffer:	PBS (without Mg ²⁺ and Ca ²⁺), pH 7.4, 150 mM NaCl, 0.02% sodium azide, 50% glycerol.
Specificity:	Detects endogenous levels of GR only when phosphorylated at serine 226.
Concentration:	1 mg/ml
Note:	THIS PRODUCT IS FOR RESEARCH USE ONLY. NOT FOR USE IN DIAGNOSTIC, THERAPEUTIC OR COSMETIC PROCEDURES. NOT FOR HUMAN OR ANIMAL CONSUMPTION.

For Reference Only