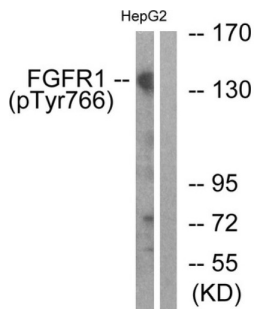


FGFR1 (Phospho-Tyr766) Antibody

Catalogue No.: abx012438



Western blot analysis of extracts from HepG2 cells, treated with EGF (200ng/ml, 30mins), using FGFR1 (Phospho-Tyr766) antibody.

Rabbit polyclonal antibody against FGFR1 protein. Immunogen region is C-terminal. Specificity is as follows for the reactive species: H:Y766, M:Y766, R:Y673.

Target:	FGFR1
Clonality:	Polyclonal
Reactivity:	Human, Mouse, Rat
Tested Applications:	ELISA, WB, IHC
Host:	Rabbit
Recommended dilutions:	WB: 1/500 - 1/3000, ELISA: 1/5000. Optimal dilutions/concentrations should be determined by the end user.
Conjugation:	Unconjugated
Immunogen:	The antiserum was produced against synthesized phosphopeptide derived from human FGFR1 around the phosphorylation site of tyrosine 766 (Q-E-YP-L-D).
Isotype:	IgG
Form:	Liquid
Purification:	Purified from rabbit antiserum by affinity chromatography using epitope-specific immunogen.
Storage:	Aliquot and store at -20°C. Avoid repeated freeze/thaw cycles.
UniProt Primary AC:	P11362 (UniProt , ExpASY)
KEGG:	hsa:2260

Datasheet

Version: 1.0.0
Revision date: 06 Feb 2025



String: [9606.ENSF00000393312](#)

Sequence: CLTSNQEYLDLSMP

Buffer: PBS (without Mg²⁺ and Ca²⁺), pH 7.4, 150 mM NaCl, 0.02% sodium azide, 50% glycerol.

Concentration: 1 mg/ml

Note: This product is for research use only.

For Reference Only