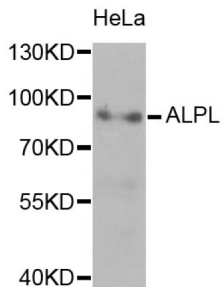
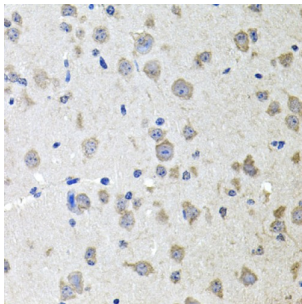


Alkaline Phosphatase, Tissue-Nonspecific Isozyme (ALPL) Antibody

Catalogue No.: abx001003



Western blot analysis of extracts of HeLa cells, using ALPL antibody (abx001003) at 1/1000 dilution.



Immunohistochemistry of paraffin-embedded mouse brain using ALPL antibody (abx001003) at dilution of 1/100 (40x lens).

ALPL Antibody is a Rabbit Polyclonal antibody against ALPL. There are at least four distinct but related alkaline phosphatases: intestinal, placental, placental-like, and liver/bone/kidney (tissue non-specific). The product of this gene is a membrane bound glycosylated enzyme that is not expressed in any particular tissue and is, therefore, referred to as the tissue-nonspecific form of the enzyme. Alkaline phosphatases form various dimers in vivo. This antibody can bind the four mentioned alkaline phosphatases.

Target: Alkaline Phosphatase, Tissue-Nonspecific Isozyme (ALPL)

Clonality: Polyclonal

Reactivity: Human, Mouse, Rat

Tested Applications: WB, IHC

Host: Rabbit

Recommended dilutions: WB: 1/500 - 1/1000, IHC-P: 1/50 - 1/200. Not tested in IHC-F. Optimal dilutions/concentrations should be determined by the end user.

Conjugation: Unconjugated

Immunogen: Recombinant fusion protein containing a sequence corresponding to amino acids 120-260 of human Alkaline Phosphatase (ALPL).

Isotype: IgG

Datasheet

Version: 3.0.0
Revision date: 25 Nov 2024



Form:	Liquid
Purification:	Purified by affinity chromatography.
Storage:	Aliquot and store at -20°C. Avoid repeated freeze/thaw cycles.
UniProt Primary AC:	P05186 (UniProt , ExpASY)
Gene Symbol:	ALPL
GeneID:	249
NCBI Accession:	NP_000469.3
KEGG:	hsa:249
String:	9606.ENSP00000363973
Molecular Weight:	Calculated MW: 57 kDa Observed MW: 80 kDa
Buffer:	PBS, pH 7.3, containing 0.05% Proclin-300, 50% glycerol.
Concentration:	> 0.2 mg/ml
Note:	This product is for research use only.

For Reference Only