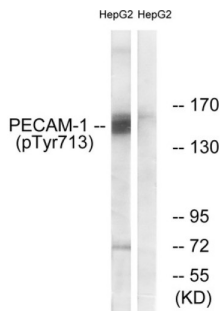
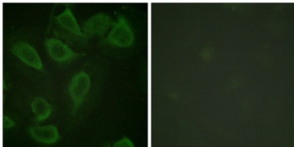


PECAM-1 (Phospho-Tyr713) Antibody

Catalogue No.: abx012447



Western blot analysis of extracts from HepG2 cells, using PECAM-1 (Phospho-Tyr713) antibody.



Immunofluorescence analysis of HeLa cells, using PECAM-1 (Phospho-Tyr713) antibody.

Rabbit polyclonal antibody against PECAM-1 protein. Immunogen region is C-terminal. Specificity is as follows for the reactive species: H:Y713, M:Y702.

| | |
|-------------------------------|--|
| Target: | PECAM-1 |
| Clonality: | Polyclonal |
| Reactivity: | Human, Mouse |
| Tested Applications: | ELISA, WB, IF/ICC |
| Host: | Rabbit |
| Recommended dilutions: | WB: 1/500 - 1/3000, IF/ICC: 1/100 - 1/500, ELISA: 1/20000. Optimal dilutions/concentrations should be determined by the end user. |
| Conjugation: | Unconjugated |
| Immunogen: | The antiserum was produced against synthesized phosphopeptide derived from human PECAM-1 around the phosphorylation site of tyrosine 713 (T-V-YP-S-E). |
| Isotype: | IgG |
| Form: | Liquid |

Datasheet

Version: 1.0.0
Revision date: 02 Dec 2024



| | |
|----------------------------|--|
| Purification: | Purified from rabbit antiserum by affinity chromatography using epitope-specific immunogen. |
| Storage: | Aliquot and store at -20°C. Avoid repeated freeze/thaw cycles. |
| UniProt Primary AC: | P16284 (UniProt , ExPASy) |
| KEGG: | hsa:5175 |
| String: | 9606.ENSP00000457421 |
| Buffer: | PBS (without Mg ²⁺ and Ca ²⁺), pH 7.4, 150 mM NaCl, 0.02% sodium azide, 50% glycerol. |
| Concentration: | 1 mg/ml |
| Note: | This product is for research use only. |

For Reference Only