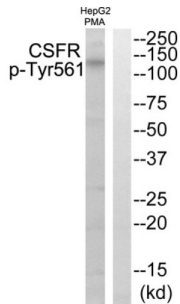
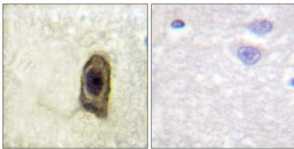


# Macrophage Colony-Stimulating Factor 1 Receptor Phospho-Tyr561 (CSFR pY561) Antibody

Catalogue No.: abx012479



Western blot analysis of extracts from HepG2 cells treated with PMA, using CSFR (Phospho-Tyr561) antibody.



Immunohistochemistry analysis of paraffin-embedded human brain using CSFR (Phospho-Tyr561) antibody.

Rabbit polyclonal antibody against CSFR protein. Immunogen region is Internal. Specificity is as follows for the reactive species: H:Y561, M:Y559, R:Y559.

<b>Target:</b>	Macrophage Colony-Stimulating Factor 1 Receptor Phospho-Tyr561 (CSF1R pY561)
<b>Clonality:</b>	Polyclonal
<b>Target Modification:</b>	Tyr561
<b>Modification:</b>	Phosphorylation
<b>Reactivity:</b>	Human, Mouse
<b>Tested Applications:</b>	ELISA, WB, IHC
<b>Host:</b>	Rabbit
<b>Recommended dilutions:</b>	WB: 1/500 - 1/3000, IHC: 1/50 - 1/100, ELISA: 1/10000. Optimal dilutions/concentrations should be determined by the end user.
<b>Conjugation:</b>	Unconjugated
<b>Immunogen:</b>	The antiserum was produced against synthesized phosphopeptide derived from human CSFR around the phosphorylation site of tyrosine 561 (N-S-YP-T-F).

# Datasheet

Version: 1.0.0  
Revision date: 11 Feb 2025



<b>Isotype:</b>	IgG
<b>Form:</b>	Liquid
<b>Purification:</b>	Purified from rabbit antiserum by affinity chromatography using epitope-specific immunogen.
<b>Storage:</b>	Aliquot and store at -20°C. Avoid repeated freeze/thaw cycles.
<b>UniProt Primary AC:</b>	P07333 ( <a href="#">UniProt</a> , <a href="#">ExPASy</a> )
<b>KEGG:</b>	hsa:1436
<b>String:</b>	<a href="#">9606.ENSP00000286301</a>
<b>Enzyme Commission Number:</b>	EC 2.7.10.1
<b>Sequence:</b>	CEGNSYTFID
<b>Buffer:</b>	PBS (without Mg <sup>2+</sup> and Ca <sup>2+</sup> ), pH 7.4, 150 mM NaCl, 0.02% sodium azide, 50% glycerol.
<b>Concentration:</b>	1 mg/ml
<b>Note:</b>	This product is for research use only.

For Reference Only