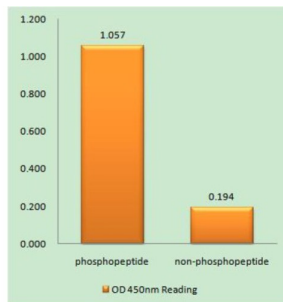
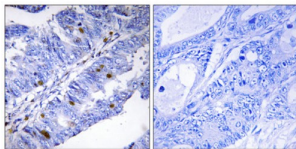


Nuclear Receptor NR4A1 (Phospho-Ser351) Antibody

Catalogue No.: abx012512



Nuclear Receptor NR4A1 (Phospho-Ser351) antibody reacts with epitope-specific phosphopeptide and corresponding non-phosphopeptide. The absorbance readings at 450 nM are shown in the ELISA figure.



Immunohistochemistry analysis of paraffin-embedded human colon carcinoma tissue using Nuclear Receptor NR4A1 (Phospho-Ser351) antibody.

Rabbit polyclonal antibody against Nuclear Receptor NR4A1 protein. Immunogen region is Internal. Specificity is as follows for the reactive species: H:S351, M:S354, R:S350.

Target: Nuclear Receptor NR4A1

Clonality: Polyclonal

Reactivity: Human, Mouse, Rat

Tested Applications: ELISA, IHC

Host: Rabbit

Recommended dilutions: IHC: 1/50 - 1/100, ELISA: 1/40000. Optimal dilutions/concentrations should be determined by the end user.

Conjugation: Unconjugated

Immunogen: The antiserum was produced against synthesized phosphopeptide derived from human Nuclear Receptor NR4A1 around the phosphorylation site of serine 351 (L-P-SP-K-P).

Isotype: IgG

Form: Liquid

Datasheet

Version: 3.0.0

Revision date: 30 Apr 2025



Purification:	Purified from rabbit antiserum by affinity chromatography using epitope-specific immunogen.
Storage:	Aliquot and store at -20°C. Avoid repeated freeze/thaw cycles.
UniProt Primary AC:	P22736 (UniProt , ExPASy)
KEGG:	hsa:3164
String:	9606.ENSP00000440864
Sequence:	CGRLPSKPKQ
Buffer:	PBS (without Mg ²⁺ and Ca ²⁺), pH 7.4, 150 mM NaCl, 0.02% sodium azide, 50% glycerol.
Concentration:	1 mg/ml
Note:	THIS PRODUCT IS FOR RESEARCH USE ONLY. NOT FOR USE IN DIAGNOSTIC, THERAPEUTIC OR COSMETIC PROCEDURES. NOT FOR HUMAN OR ANIMAL CONSUMPTION.

For Reference Only