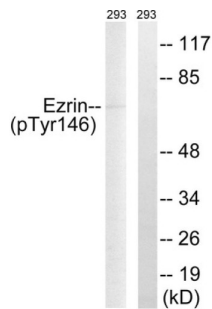


Ezrin (Phospho-Tyr146) Antibody

Catalogue No.: abx012576



Western blot analysis of extracts from 293 cells, treated with UV (15mins), using Ezrin (Phospho-Tyr146) antibody.

Rabbit polyclonal antibody against Ezrin protein. Immunogen region is Internal. Specificity is as follows for the reactive species: H:Y146, M:Y146, R:Y146.

Target:	Ezrin
Clonality:	Polyclonal
Reactivity:	Human, Mouse, Rat
Tested Applications:	ELISA, WB
Host:	Rabbit
Recommended dilutions:	WB: 1/500 - 1/3000, ELISA: 1/40000. Optimal dilutions/concentrations should be determined by the end user.
Conjugation:	Unconjugated
Immunogen:	The antiserum was produced against synthesized phosphopeptide derived from human Ezrin around the phosphorylation site of tyrosine 146 (S-G-YP-L-S).
Isotype:	IgG
Form:	Liquid
Purification:	Purified from rabbit antiserum by affinity chromatography using epitope-specific immunogen.
Storage:	Aliquot and store at -20°C. Avoid repeated freeze/thaw cycles.
UniProt Primary AC:	P15311 (UniProt , ExPASy)
KEGG:	hsa:7430

Datasheet

Version: 2.0.0

Revision date: 12 Sep 2024



String: [9606.ENSF00000356042](#)

Buffer: PBS (without Mg^{2+} and Ca^{2+}), pH 7.4, 150 mM NaCl, 0.02% sodium azide, 50% glycerol.

Concentration: 1 mg/ml

Note: This product is for research use only.

For Reference Only