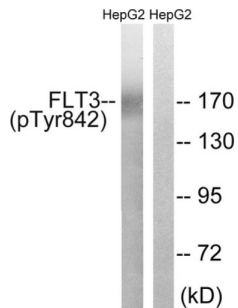


## Receptor-type tyrosine-protein kinase FLT3 Phospho-Tyr842 (FLT3 pY842) Antibody

Catalogue No.: abx012600



Western blot analysis of extracts from HepG2 cells, treated with EGF (200ng/ml, 30mins), using FLT3 (Phospho-Tyr842) antibody.

Rabbit polyclonal antibody against FLT3 protein. Immunogen region is C-terminal. Specificity is as follows for the reactive species: H:Y842, M:Y845.

<b>Target:</b>	Receptor-type tyrosine-protein kinase FLT3 Phospho-Tyr842 (FLT3 pY842)
<b>Clonality:</b>	Polyclonal
<b>Target Modification:</b>	Tyr842
<b>Modification:</b>	Phosphorylation
<b>Reactivity:</b>	Human, Mouse
<b>Tested Applications:</b>	ELISA, WB
<b>Host:</b>	Rabbit
<b>Recommended dilutions:</b>	WB: 1/500 - 1/3000, ELISA: 1/10000. Optimal dilutions/concentrations should be determined by the end user.
<b>Conjugation:</b>	Unconjugated
<b>Immunogen:</b>	The antiserum was produced against synthesized phosphopeptide derived from human FLT3 around the phosphorylation site of tyrosine 842 (S-N-YP-V-V).
<b>Isotype:</b>	IgG
<b>Form:</b>	Liquid
<b>Purification:</b>	Purified from rabbit antiserum by affinity chromatography using epitope-specific immunogen.
<b>Storage:</b>	Aliquot and store at -20°C. Avoid repeated freeze/thaw cycles.

# Datasheet

Version: 1.0.0

Revision date: 02 Dec 2024



**UniProt Primary AC:** P36888 ([UniProt](#), [ExPASy](#))

**KEGG:** hsa:2322

**String:** [9606.ENSP00000241453](#)

**Enzyme Commission Number:** EC 2.7.10.1

**Buffer:** PBS (without  $Mg^{2+}$  and  $Ca^{2+}$ ), pH 7.4, 150 mM NaCl, 0.02% sodium azide, 50% glycerol.

**Concentration:** 1 mg/ml

**Note:** This product is for research use only.

For Reference Only