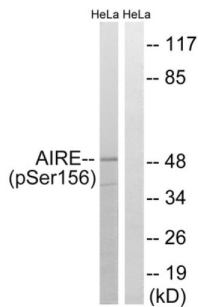


Autoimmune Regulator Phospho-Ser156 (AIRE pS156) Antibody

Catalogue No.: abx012667



Western blot analysis of extracts from HeLa cells, treated with Hu (2nM, 24hours), using AIRE (Phospho-Ser156) antibody.

Rabbit polyclonal antibody against AIRE protein. Immunogen region is Internal. Specificity is as follows for the reactive species: H:S156.

Target:	Autoimmune Regulator Phospho-Ser156 (AIRE pS156)
Clonality:	Polyclonal
Target Modification:	Ser156
Modification:	Phosphorylation
Reactivity:	Human
Tested Applications:	ELISA, WB
Host:	Rabbit
Recommended dilutions:	WB: 1/500 - 1/3000, ELISA: 1/1000. Optimal dilutions/concentrations should be determined by the end user.
Conjugation:	Unconjugated
Immunogen:	The antiserum was produced against synthesized phosphopeptide derived from human AIRE around the phosphorylation site of serine 156 (P-G-SP-Q-L).
Isotype:	IgG
Form:	Liquid
Purification:	Purified from rabbit antiserum by affinity chromatography using epitope-specific immunogen.
Storage:	Aliquot and store at -20°C. Avoid repeated freeze/thaw cycles.

Datasheet

Version: 1.0.0

Revision date: 06 Oct 2024



UniProt Primary AC: O43918 ([UniProt](#), [ExpASY](#))

KEGG: hsa:326

String: [9606.ENSP00000291582](#)

Buffer: PBS (without Mg²⁺ and Ca²⁺), pH 7.4, 150 mM NaCl, 0.02% sodium azide, 50% glycerol.

Concentration: 1 mg/ml

Note: This product is for research use only.

For Reference Only