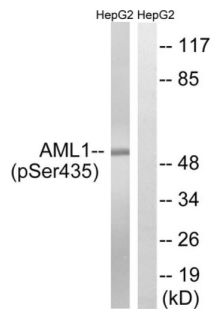


AML1 (Phospho-Ser435) Antibody

Catalogue No.: abx012668



Western blot analysis of extracts from HepG2 cells, treated with PMA (125ng/ml, 30mins), using AML1 (Phospho-Ser435) antibody.

Rabbit polyclonal antibody against AML1 protein. Immunogen region is C-terminal. Specificity is as follows for the reactive species: H:S435, M:S435, R:S434.

Target:	AML1
Clonality:	Polyclonal
Target Modification:	Ser435
Modification:	Phosphorylation
Reactivity:	Human, Mouse, Rat
Tested Applications:	ELISA, WB
Host:	Rabbit
Recommended dilutions:	WB: 1/500 - 1/3000, ELISA: 1/10000. Optimal dilutions/concentrations should be determined by the end user.
Conjugation:	Unconjugated
Immunogen:	The antiserum was produced against synthesized phosphopeptide derived from human AML1 around the phosphorylation site of serine 435 (S-N-SP-P-T).
Isotype:	IgG
Form:	Liquid
Purification:	Purified from rabbit antiserum by affinity chromatography using epitope-specific phosphopeptide. The antibody against non-phosphopeptide was removed by chromatography using non-phosphopeptide corresponding to the phosphorylation site.
Storage:	Aliquot and store at -20°C. Avoid repeated freeze/thaw cycles.

Datasheet

Version: 4.0.0
Revision date: 02 Apr 2025



UniProt Primary AC:	Q01196 (UniProt , ExPASy)
KEGG:	hsa:861
String:	9606.ENSP00000300305
Buffer:	PBS (without Mg ²⁺ and Ca ²⁺), pH 7.4, 150 mM NaCl, 0.02% sodium azide, 50% glycerol.
Specificity:	Detects endogenous levels of AML1 only when phosphorylated at serine 435.
Concentration:	1 mg/ml
Note:	THIS PRODUCT IS FOR RESEARCH USE ONLY. NOT FOR USE IN DIAGNOSTIC, THERAPEUTIC OR COSMETIC PROCEDURES. NOT FOR HUMAN OR ANIMAL CONSUMPTION.

For Reference Only