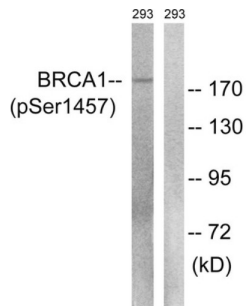


Breast Cancer Type 1 Susceptibility Protein Phospho-Ser1457 (BRCA1 pS1457) Antibody

Catalogue No.: abx012674



Western blot analysis of extracts from 293 cells, treated with epo (20U/ml, 15mins), using BRCA1 (Phospho-Ser1457) antibody.

Rabbit polyclonal antibody against BRCA1 protein. Immunogen region is C-terminal. Specificity is as follows for the reactive species: H:S1457.

Target:	Breast Cancer Type 1 Susceptibility Protein Phospho-Ser1457 (BRCA1 pS1457)
Clonality:	Polyclonal
Target Modification:	Ser1457
Modification:	Phosphorylation
Reactivity:	Human
Tested Applications:	ELISA, WB
Host:	Rabbit
Recommended dilutions:	WB: 1/500 - 1/3000, ELISA: 1/1000. Optimal dilutions/concentrations should be determined by the end user.
Conjugation:	Unconjugated
Immunogen:	The antiserum was produced against synthesized phosphopeptide derived from human BRCA1 around the phosphorylation site of serine 1457 (L-T-SP-Q-K).
Isotype:	IgG
Form:	Liquid
Purification:	Purified from rabbit antiserum by affinity chromatography using epitope-specific immunogen.
Storage:	Aliquot and store at -20°C. Avoid repeated freeze/thaw cycles.

Datasheet

Version: 2.0.0

Revision date: 07 Sep 2024



UniProt Primary AC: P38398 ([UniProt](#), [ExPASy](#))

KEGG: hsa:672

String: [9606.ENSP00000418960](#)

Buffer: PBS (without Mg²⁺ and Ca²⁺), pH 7.4, 150 mM NaCl, 0.02% sodium azide, 50% glycerol.

Concentration: 1 mg/ml

Note: This product is for research use only.

For Reference Only