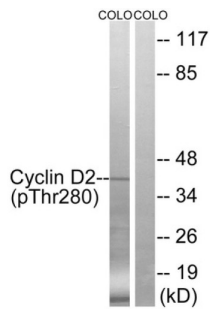


G1/S-Specific Cyclin-D2 Phospho-Thr280 (CCND2 pT280) Antibody

Catalogue No.: abx012685



Western blot analysis of extracts from COLO cells, treated with EGF (200ng/ml, 30mins), using Cyclin D2 (Phospho-Thr280) antibody.

Rabbit polyclonal antibody against Cyclin D2 protein. Immunogen region is C-terminal. Specificity is as follows for the reactive species: H:T280, M:T279, R:T279.

Target:	G1/S-Specific Cyclin-D2 Phospho-Thr280 (CCND2 pT280)
Clonality:	Polyclonal
Target Modification:	Thr280
Modification:	Phosphorylation
Reactivity:	Human, Mouse, Rat
Tested Applications:	ELISA, WB
Host:	Rabbit
Recommended dilutions:	WB: 1/500 - 1/3000, ELISA: 1/1000. Optimal dilutions/concentrations should be determined by the end user.
Conjugation:	Unconjugated
Immunogen:	The antiserum was produced against synthesized phosphopeptide derived from human Cyclin D2 around the phosphorylation site of threonine 280 (A-S-TP-P-T).
Isotype:	IgG
Form:	Liquid
Purification:	Purified from rabbit antiserum by affinity chromatography using epitope-specific immunogen.
Storage:	Aliquot and store at -20°C. Avoid repeated freeze/thaw cycles.

Datasheet

Version: 2.0.0

Revision date: 17 Oct 2024



UniProt Primary AC: P30279 ([UniProt](#), [ExPASy](#))

KEGG: hsa:894

String: [9606.ENSP00000261254](#)

Buffer: PBS (without Mg²⁺ and Ca²⁺), pH 7.4, 150 mM NaCl, 0.02% sodium azide, 50% glycerol.

Concentration: 1 mg/ml

Note: This product is for research use only.

For Reference Only