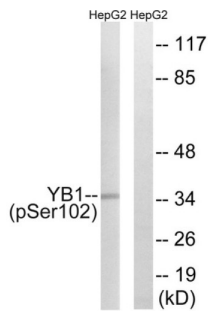


Y-Box Binding Protein 1 Phospho-Ser102 (YBX1 pS102) Antibody

Catalogue No.: abx012717



Rabbit polyclonal antibody against YB1 protein. Immunogen region is Internal. Specificity is as follows for the reactive species: H:S102, M:S100, R:S100.

Target:	Y-Box Binding Protein 1 Phospho-Ser102 (YBX1 pS102)
Clonality:	Polyclonal
Target Modification:	Ser102
Modification:	Phosphorylation
Reactivity:	Human, Mouse, Rat
Tested Applications:	ELISA, WB
Host:	Rabbit
Recommended dilutions:	ELISA: 1/40000, WB: 1/500 - 1/3000. Optimal dilutions/concentrations should be determined by the end user.
Conjugation:	Unconjugated
Immunogen:	The antiserum was produced against synthesized phosphopeptide derived from human YBX1 around the phosphorylation site of serine 102 (L-R-S ^P -V-G).
Isotype:	IgG
Form:	Liquid
Purification:	Purified from rabbit antiserum by affinity chromatography using epitope-specific phosphopeptide. The antibody against non-phosphopeptide was removed by chromatography using non-phosphopeptide corresponding to the phosphorylation site.
Storage:	Aliquot and store at -20°C. Avoid repeated freeze/thaw cycles.

Datasheet

Version: 4.0.0
Revision date: 18 Mar 2025



UniProt Primary AC: P67809 ([UniProt](#), [ExPASy](#))

KEGG: hsa:4904

String: [9606.ENSP00000361626](#)

Buffer: PBS (without Mg²⁺ and Ca²⁺), pH 7.4, 150 mM NaCl, 0.02% sodium azide, 50% glycerol.

Specificity: Detects endogenous levels of YBX1 only when phosphorylated at serine 102.

Concentration: 1 mg/ml

Note: THIS PRODUCT IS FOR RESEARCH USE ONLY. NOT FOR USE IN DIAGNOSTIC, THERAPEUTIC OR COSMETIC PROCEDURES. NOT FOR HUMAN OR ANIMAL CONSUMPTION.

For Reference Only