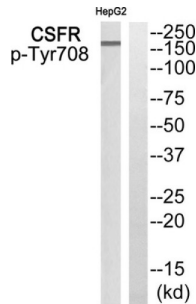


Macrophage Colony-Stimulating Factor 1 Receptor Phospho-Tyr708 (CSF1R pY708) Antibody

Catalogue No.: abx012734



Rabbit polyclonal antibody against CSFR protein. Immunogen region is C-terminal. Specificity is as follows for the reactive species: H:Y708, M:Y706, R:Y706.

| | |
|-------------------------------|--|
| Target: | Macrophage Colony-Stimulating Factor 1 Receptor Phospho-Tyr708 (CSF1R pY708) |
| Clonality: | Polyclonal |
| Target Modification: | Tyr708 |
| Modification: | Phosphorylation |
| Reactivity: | Human, Mouse, Rat |
| Tested Applications: | WB |
| Host: | Rabbit |
| Recommended dilutions: | Optimal dilutions/concentrations should be determined by the end user. |
| Conjugation: | Unconjugated |
| Immunogen: | The antiserum was produced against synthesized phosphopeptide derived from human CSFR around the phosphorylation site of tyrosine 708. |
| Isotype: | IgG |
| Form: | Liquid |
| Purification: | Purified from rabbit antiserum by affinity chromatography using epitope-specific immunogen. |
| Storage: | Aliquot and store at -20°C. Avoid repeated freeze/thaw cycles. |

Datasheet

Version: 4.0.0
Revision date: 24 Apr 2025



UniProt Primary AC: P07333 ([UniProt](#), [ExPASy](#))

KEGG: hsa:1436

String: [9606.ENSP00000286301](#)

Buffer: PBS (without Mg²⁺ and Ca²⁺), pH 7.4, 150 mM NaCl, 0.02% sodium azide, 50% glycerol.

Concentration: 1 mg/ml

Note: THIS PRODUCT IS FOR RESEARCH USE ONLY. NOT FOR USE IN DIAGNOSTIC, THERAPEUTIC OR COSMETIC PROCEDURES. NOT FOR HUMAN OR ANIMAL CONSUMPTION.

For Reference Only