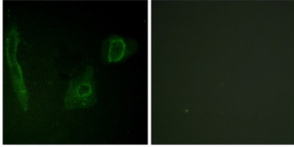
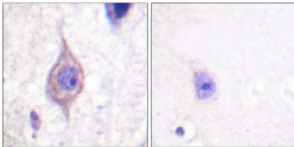


## ALK Tyrosine Kinase Receptor (ALK) Antibody

Catalogue No.: abx012794



Immunofluorescence analysis of HeLa cells, using ALK antibody.



Immunohistochemistry analysis of paraffin-embedded human brain tissue using ALK antibody.

Rabbit polyclonal antibody against ALK protein. Immunogen region is C-terminal.

<b>Target:</b>	ALK Tyrosine Kinase Receptor (ALK)
<b>Clonality:</b>	Polyclonal
<b>Reactivity:</b>	Human
<b>Tested Applications:</b>	ELISA, IHC, IF/ICC
<b>Host:</b>	Rabbit
<b>Recommended dilutions:</b>	IHC: 1/50 - 1/100, IF/ICC: 1/100 - 1/500, ELISA: 1/1000. Optimal dilutions/concentrations should be determined by the end user.
<b>Conjugation:</b>	Unconjugated
<b>Immunogen:</b>	The antiserum was produced against synthesized peptide derived from C-terminal of human ALK.
<b>Isotype:</b>	IgG
<b>Form:</b>	Liquid
<b>Purification:</b>	Purified from rabbit antiserum by affinity chromatography using epitope-specific immunogen.

# Datasheet

Version: 2.0.0  
Revision date: 12 Mar 2025



**Storage:** Aliquot and store at -20°C. Avoid repeated freeze/thaw cycles.

**UniProt Primary AC:** Q9UM73 ([UniProt](#), [ExPASy](#))

**String:** [9606.ENSP00000373700](#)

**Enzyme Commission Number:** EC 2.7.10.1

**Sequence:** CGAGHYEDT

**Buffer:** PBS (without Mg<sup>2+</sup> and Ca<sup>2+</sup>), pH 7.4, 150 mM NaCl, 0.02% sodium azide, 50% glycerol.

**Concentration:** 1 mg/ml

**Note:** THIS PRODUCT IS FOR RESEARCH USE ONLY. NOT FOR USE IN DIAGNOSTIC, THERAPEUTIC OR COSMETIC PROCEDURES. NOT FOR HUMAN OR ANIMAL CONSUMPTION.

For Reference Only