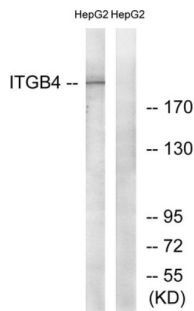
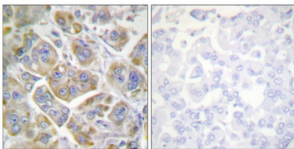


## Integrin Beta 4 (ITGb4) Antibody

Catalogue No.: abx012831



Western blot analysis of extracts from HepG2 cells, treated with PMA (125ng/ml, 30mins), using ITGB4 (epitope around residue 1510) antibody.



Immunohistochemistry analysis of paraffin-embedded human breast carcinoma tissue using ITGB4 (epitope around residue 1510) antibody.

Rabbit polyclonal antibody against Integrin beta 4 protein. Immunogen region is C-terminal.

<b>Target:</b>	Integrin Beta 4 (ITGb4)
<b>Clonality:</b>	Polyclonal
<b>Reactivity:</b>	Human, Mouse, Rat
<b>Tested Applications:</b>	ELISA, WB, IHC
<b>Host:</b>	Rabbit
<b>Recommended dilutions:</b>	WB: 1/500 - 1/3000, IHC: 1/50 - 1/100, ELISA: 1/5000. Optimal dilutions/concentrations should be determined by the end user.
<b>Conjugation:</b>	Unconjugated
<b>Immunogen:</b>	The antiserum was produced against synthesized non-phosphopeptide derived from human ITGB4 around the phosphorylation site of tyrosine 1510 (R-D-YP-S-T).
<b>Isotype:</b>	IgG
<b>Form:</b>	Liquid
<b>Purification:</b>	Purified from rabbit antiserum by affinity chromatography using epitope-specific immunogen.

# Datasheet

Version: 4.0.0  
Revision date: 13 Mar 2025



**Storage:** Aliquot and store at -20°C. Avoid repeated freeze/thaw cycles.

**UniProt Primary AC:** P16144 ([UniProt](#), [ExpASY](#))

**KEGG:** hsa:3691

**String:** [9606.ENSP00000200181](#)

**Sequence:** CLPRDYSTLT

**Buffer:** PBS (without Mg<sup>2+</sup> and Ca<sup>2+</sup>), pH 7.4, 150 mM NaCl, 0.02% sodium azide, 50% glycerol.

**Concentration:** 1 mg/ml

**Note:** THIS PRODUCT IS FOR RESEARCH USE ONLY. NOT FOR USE IN DIAGNOSTIC, THERAPEUTIC OR COSMETIC PROCEDURES. NOT FOR HUMAN OR ANIMAL CONSUMPTION.

For Reference Only