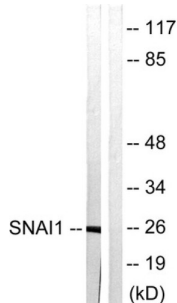


Snail Family Transcriptional Repressor 1 / SNAIL Phospho-Ser246 (SNAI1 pS246) Antibody

Catalogue No.: abx012844



Western blot analysis of extracts from HT29 cells, using SNAI1 antibody.

Rabbit polyclonal antibody against SNAI1 protein. Immunogen region is C-terminal.

Target:	Snail Family Transcriptional Repressor 1 / SNAIL (SNAI1)
Clonality:	Polyclonal
Target Modification:	Ser246
Modification:	Phosphorylation
Reactivity:	Human, Mouse
Tested Applications:	ELISA, WB
Host:	Rabbit
Recommended dilutions:	WB: 1/500 - 1/3000, ELISA: 1/1000. Optimal dilutions/concentrations should be determined by the end user.
Conjugation:	Unconjugated
Immunogen:	The antiserum was produced against synthesized non-phosphopeptide derived from Human SNAI1 around the phosphorylation site of serine 246 (T-F-S ^P -R-M).
Isotype:	IgG
Form:	Liquid
Purification:	Purified from rabbit antiserum by affinity chromatography using epitope-specific immunogen.
Storage:	Aliquot and store at -20°C. Avoid repeated freeze/thaw cycles.

Datasheet

Version: 3.0.0

Revision date: 26 Mar 2025



UniProt Primary AC: O95863 ([UniProt](#), [ExpASY](#))

KEGG: hsa:6615

String: [9606.ENSP00000244050](#)

Buffer: PBS (without Mg^{2+} and Ca^{2+}), pH 7.4, 150 mM NaCl, 0.02% sodium azide, 50% glycerol.

Concentration: 1 mg/ml

Note: THIS PRODUCT IS FOR RESEARCH USE ONLY. NOT FOR USE IN DIAGNOSTIC, THERAPEUTIC OR COSMETIC PROCEDURES. NOT FOR HUMAN OR ANIMAL CONSUMPTION.

For Reference Only