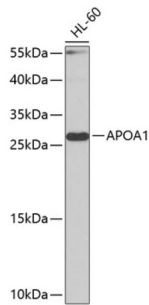
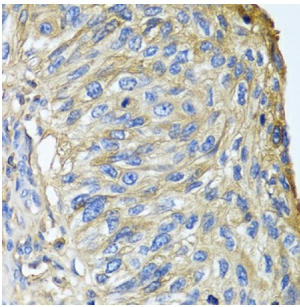


Apolipoprotein A1 (APOA1) Antibody

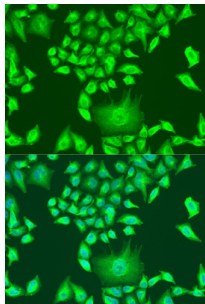
Catalogue No.: abx001043



Western blot analysis of extracts of HL-60 cells using APOA1 Antibody (1/1000 dilution).



Immunohistochemistry of paraffin-embedded Human prostate cancer using APOA1 Antibody (1/100 dilution, 40x lens).



Immunofluorescence analysis of U2OS cells using APOA1 Antibody (1/100 dilution). Blue: DAPI for nuclear staining.

APOA1 Antibody is a Rabbit Polyclonal antibody against APOA1. This gene encodes apolipoprotein A-I, which is the major protein component of high density lipoprotein (HDL) in plasma. The protein promotes cholesterol efflux from tissues to the liver for excretion, and it is a cofactor for lecithin cholesterolacyltransferase (LCAT) which is responsible for the formation of most plasma cholesteryl esters. This gene is closely linked with two other apolipoprotein genes on chromosome 11. Defects in this gene are associated with HDL deficiencies, including Tangier disease, and with systemic non-neuropathic amyloidosis.

Target: Apolipoprotein A1 (APOA1)

Clonality: Polyclonal

Reactivity: Human, Mouse

Tested Applications: WB, IHC, IF/ICC

Host: Rabbit

Datasheet

Version: 6.0.0
Revision date: 25 Apr 2025



Recommended dilutions: WB: 1/500 - 1/2000, IHC-P: 1/50 - 1/100, IF/ICC: 1/50 - 1/200. Not tested in IHC-F. Optimal dilutions/concentrations should be determined by the end user.

Conjugation: Unconjugated

Immunogen: Recombinant fusion protein corresponding to human APOA1

Isotype: IgG

Form: Liquid

Purification: Purified by affinity chromatography.

Storage: Aliquot and store at -20°C. Avoid repeated freeze/thaw cycles.

UniProt Primary AC: P02647 ([UniProt](#), [ExPASy](#)) Q00623 ([UniProt](#), [ExPASy](#))

Gene Symbol: APOA1

GeneID: [335 11806](#)

OMIM: [107680](#)

NCBI Accession: NP_000030.1

HGNC: 600

Ensembl: ENSG00000118137, ENSMUSG00000032083

String: [9606.ENSP00000236850](#) [10090.ENSMUSP00000034588](#)

Molecular Weight: Calculated MW: 30 kDa
Observed MW: 31 kDa

Buffer: PBS, pH 7.3, containing 0.02% sodium azide, 50% glycerol.

Concentration: 1 mg/ml

Note: THIS PRODUCT IS FOR RESEARCH USE ONLY. NOT FOR USE IN DIAGNOSTIC, THERAPEUTIC OR COSMETIC PROCEDURES. NOT FOR HUMAN OR ANIMAL CONSUMPTION.