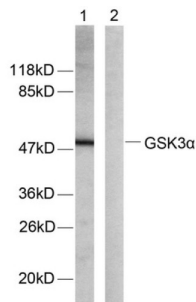


Datasheet

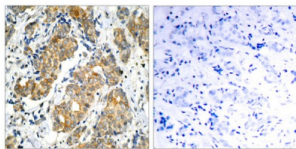
Version: 3.0.0
Revision date: 23 Apr 2025

GSK3 alpha Antibody

Catalogue No.: abx012858



Western blot analysis of extracts from ovary cancer cells. Line1: Using GSK3 alpha (epitope around residue 21) Antibody (abx012858) ; Line2: The same antibody preincubated with synthesized peptide.



Immunohistochemical analysis of paraffin- embedded breast carcinoma. Left: Using GSK3 alpha (epitope around residue 21) Antibody (abx012858) ; Right: The same antibody preincubated with synthesized peptide.

Rabbit polyclonal antibody against GSK3 alpha protein. Immunogen region is N-terminal.

Target:	GSK3 alpha
Clonality:	Polyclonal
Reactivity:	Human, Mouse, Rat
Tested Applications:	ELISA, WB, IHC, IP
Host:	Rabbit
Recommended dilutions:	WB: 1/500 - 1/3000, IHC: 1/50 - 1/100, ELISA: 1/20000. Optimal dilutions/concentrations should be determined by the end user.
Conjugation:	Unconjugated
Immunogen:	This antiserum was produced against synthesized non-phosphopeptide derived from human GSK3 alpha around the phosphorylation site of Serine 21.
Isotype:	IgG
Form:	Liquid
Purification:	Purified from rabbit antiserum by affinity chromatography using epitope-specific immunogen.

Datasheet

Version: 3.0.0
Revision date: 23 Apr 2025



Storage:	Aliquot and store at -20°C. Avoid repeated freeze/thaw cycles.
UniProt Primary AC:	P49840 (UniProt , ExpASY)
KEGG:	hsa:2931
String:	9606.ENSP00000222330
Sequence:	GRARTSSFAEPGGC
Buffer:	PBS (without Mg ²⁺ and Ca ²⁺), pH 7.4, 150 mM NaCl, 0.02% sodium azide, 50% glycerol.
Concentration:	1 mg/ml
Note:	THIS PRODUCT IS FOR RESEARCH USE ONLY. NOT FOR USE IN DIAGNOSTIC, THERAPEUTIC OR COSMETIC PROCEDURES. NOT FOR HUMAN OR ANIMAL CONSUMPTION.

For Reference Only