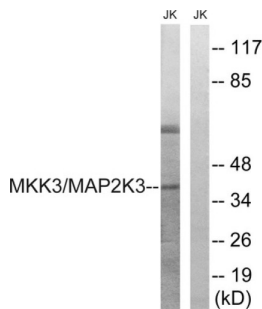


Mitogen-Activated Protein Kinase Kinase 3 (MAP2K3) Antibody

Catalogue No.: abx012922



Western blot analysis of extracts from Jurkat cells, treated with serum (20%, 15mins), using MAP2K3 (epitope around residue 222) antibody.

Rabbit polyclonal antibody against MAP2K3 protein. Immunogen region is Internal.

Target:	Mitogen-Activated Protein Kinase Kinase 3 (MAP2K3)
Clonality:	Polyclonal
Reactivity:	Human, Mouse, Rat
Tested Applications:	ELISA, WB
Host:	Rabbit
Recommended dilutions:	WB: 1/500 - 1/3000, ELISA: 1/5000. Optimal dilutions/concentrations should be determined by the end user.
Conjugation:	Unconjugated
Immunogen:	The antiserum was produced against synthesized non-phosphopeptide derived from human MAP2K3 around the phosphorylation site of threonine 222 (A-K-TP-M-D).
Isotype:	IgG
Form:	Liquid
Purification:	Purified from rabbit antiserum by affinity chromatography using epitope-specific immunogen.
Storage:	Aliquot and store at -20°C. Avoid repeated freeze/thaw cycles.
UniProt Primary AC:	P46734 (UniProt , ExPASy)
KEGG:	hsa:5606
String:	9606.ENSP00000345083

Datasheet

Version: 1.0.0

Revision date: 28 Jan 2025



Enzyme Commission Number: EC 2.7.12.2

Buffer: PBS (without Mg^{2+} and Ca^{2+}), pH 7.4, 150 mM NaCl, 0.02% sodium azide, 50% glycerol.

Concentration: 1 mg/ml

Note: This product is for research use only.

For Reference Only