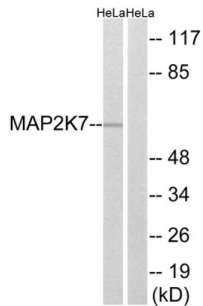


Dual Specificity Mitogen-Activated Protein Kinase Kinase 7 (MAP2K7) Antibody

Catalogue No.: abx012923



Western blot analysis of extracts from HeLa cells, using MAP2K7 (epitope around residue 271) antibody.

Rabbit polyclonal antibody against MAP2K7 protein. Immunogen region is Internal.

Target:	Dual Specificity Mitogen-Activated Protein Kinase Kinase 7 (MAP2K7)
Clonality:	Polyclonal
Reactivity:	Human, Mouse, Rat
Tested Applications:	ELISA, WB
Host:	Rabbit
Recommended dilutions:	ELISA: 1/20000, WB: 1/500 - 1/3000. Optimal dilutions/concentrations should be determined by the end user.
Conjugation:	Unconjugated
Immunogen:	The antiserum was produced against synthesized non-phosphopeptide derived from human MAP2K7 around the phosphorylation site of serine 271 (V-D-SP-K-A).
Isotype:	IgG
Form:	Liquid
Purification:	Purified from rabbit antiserum by affinity chromatography using epitope-specific immunogen.
Storage:	Aliquot and store at -20°C. Avoid repeated freeze/thaw cycles.
UniProt Primary AC:	O14733 (UniProt , ExpASy)
KEGG:	hsa:5609

Datasheet

Version: 2.0.0

Revision date: 28 Jan 2025



String: [9606.ENSP00000381070](#)

Enzyme Commission Number: EC 2.7.11.25

Buffer: PBS (without Mg^{2+} and Ca^{2+}), pH 7.4, 150 mM NaCl, 0.02% sodium azide, 50% glycerol.

Concentration: 1 mg/ml

Note: This product is for research use only.

For Reference Only