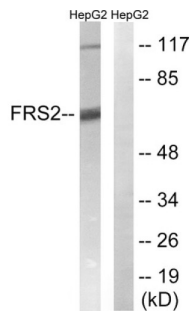


Fibroblast Growth Factor Receptor Substrate 2 (FRS2) Antibody

Catalogue No.: abx012942



Western blot analysis of extracts from HepG2 cells, using FRS2 (epitope around residue 196) antibody.

Rabbit polyclonal antibody against FRS2 protein. Immunogen region is Internal.

| | |
|-------------------------------|---|
| Target: | Fibroblast Growth Factor Receptor Substrate 2 (FRS2) |
| Clonality: | Polyclonal |
| Reactivity: | Human, Mouse |
| Tested Applications: | ELISA, WB |
| Host: | Rabbit |
| Recommended dilutions: | WB: 1/500 - 1/3000, ELISA: 1/40000. Optimal dilutions/concentrations should be determined by the end user. |
| Conjugation: | Unconjugated |
| Immunogen: | The antiserum was produced against synthesized non-phosphopeptide derived from human FRS2 around the phosphorylation site of tyrosine 196 (H-T-YP-V-N). |
| Isotype: | IgG |
| Form: | Liquid |
| Purification: | Purified from rabbit antiserum by affinity chromatography using epitope-specific immunogen. |
| Storage: | Aliquot and store at -20°C. Avoid repeated freeze/thaw cycles. |
| UniProt Primary AC: | Q8WU20 (UniProt , ExpASY) |
| KEGG: | hsa:10818 |
| String: | 9606.ENSP00000447241 |

Datasheet

Version: 2.0.0

Revision date: 03 Dec 2024



- Buffer:** PBS (without Mg^{2+} and Ca^{2+}), pH 7.4, 150 mM NaCl, 0.02% sodium azide, 50% glycerol.
- Concentration:** 1 mg/ml
- Note:** This product is for research use only.

For Reference Only