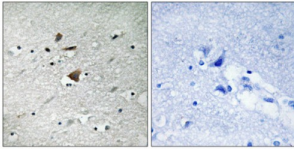


Anaphase-Promoting Complex Subunit 1 (ANAPC1) Antibody

Catalogue No.: abx012953



Immunohistochemistry analysis of paraffin-embedded human brain tissue, using APC1 antibody.

Rabbit polyclonal antibody against APC1 protein. Immunogen region is Internal.

Target:	Anaphase-Promoting Complex Subunit 1 (ANAPC1)
Clonality:	Polyclonal
Reactivity:	Human, Mouse
Tested Applications:	ELISA, IHC
Host:	Rabbit
Recommended dilutions:	IHC: 1/50 - 1/100, ELISA: 1/40000. Optimal dilutions/concentrations should be determined by the end user.
Conjugation:	Unconjugated
Immunogen:	The antiserum was produced against synthesized non-phosphopeptide derived from human APC1 around the phosphorylation site of residue 355.
Isotype:	IgG
Form:	Liquid
Purification:	Purified from rabbit antiserum by affinity chromatography using epitope-specific immunogen.
Storage:	Aliquot and store at -20°C. Avoid repeated freeze/thaw cycles.
UniProt Primary AC:	Q9H1A4 (UniProt , ExpASY)
String:	9606.ENSP00000339109
Sequence:	LSRAHSPALGVHSC

Datasheet

Version: 1.0.0

Revision date: 22 Nov 2024



- Buffer:** PBS (without Mg^{2+} and Ca^{2+}), pH 7.4, 150 mM NaCl, 0.02% sodium azide, 50% glycerol.
- Concentration:** 1 mg/ml
- Note:** This product is for research use only.

For Reference Only