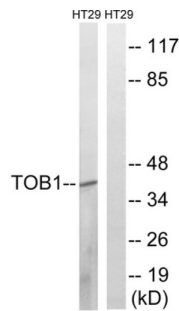


Datasheet

Version: 1.0.0
Revision date: 15 Nov 2024

Protein Tob1 (TOB1) Antibody

Catalogue No.: abx012991



Western blot analysis of extracts from HT-29 cells, treated with serum (20%, 15mins), using TOB1 (epitope around residue 164) antibody.

Rabbit polyclonal antibody against TOB1 protein. Immunogen region is Internal.

Target:	Protein Tob1 (TOB1)
Clonality:	Polyclonal
Reactivity:	Human, Mouse, Rat
Tested Applications:	ELISA, WB, IHC
Host:	Rabbit
Recommended dilutions:	WB: 1/500 - 1/3000, ELISA: 1/10000. Optimal dilutions/concentrations should be determined by the end user.
Conjugation:	Unconjugated
Immunogen:	The antiserum was produced against synthesized non-phosphopeptide derived from human TOB1 around the phosphorylation site of serine 164 (A-V-SP-P-T).
Isotype:	IgG
Form:	Liquid
Purification:	Purified from rabbit antiserum by affinity chromatography using epitope-specific immunogen.
Storage:	Aliquot and store at -20°C. Avoid repeated freeze/thaw cycles.
UniProt Primary AC:	P50616 (UniProt , ExpASY)
KEGG:	hsa:10140
String:	9606.ENSP00000427695

Datasheet

Version: 1.0.0
Revision date: 15 Nov 2024



Sequence: CGHSAAVSPTFMPR

Buffer: PBS (without Mg²⁺ and Ca²⁺), pH 7.4, 150 mM NaCl, 0.02% sodium azide, 50% glycerol.

Concentration: 1 mg/ml

Note: This product is for research use only.

For Reference Only