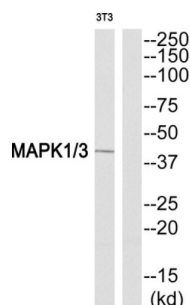


Mitogen-Activated Protein Kinase 1 and 3 / ERK1/2 (MAPK1/MAPK3) Antibody

Catalogue No.: abx012998



Rabbit polyclonal antibody against MAPK1/3 protein. Immunogen region is Internal.

Target:	Mitogen-Activated Protein Kinase 1 and 3 / ERK1/2 (MAPK1/MAPK3)
Clonality:	Polyclonal
Reactivity:	Human, Mouse, Rat
Tested Applications:	WB
Host:	Rabbit
Recommended dilutions:	Optimal dilutions/concentrations should be determined by the end user.
Conjugation:	Unconjugated
Immunogen:	The antiserum was produced against synthesized non-phosphopeptide derived from human MAPK1/3 around the phosphorylation site of tyrosine 205/222.
Isotype:	IgG
Form:	Liquid
Purification:	Purified from rabbit antiserum by affinity chromatography using epitope-specific immunogen.
Storage:	Aliquot and store at -20°C. Avoid repeated freeze/thaw cycles.
UniProt Primary AC:	P28482 (UniProt , ExPASy) P27361 (UniProt , ExPASy)
Buffer:	PBS (without Mg^{2+} and Ca^{2+}), pH 7.4, 150 mM NaCl, 0.02% sodium azide, 50% glycerol.

Datasheet

Version: 3.0.0

Revision date: 30 Apr 2025



Concentration: 1 mg/ml

Note: THIS PRODUCT IS FOR RESEARCH USE ONLY. NOT FOR USE IN DIAGNOSTIC, THERAPEUTIC OR COSMETIC PROCEDURES. NOT FOR HUMAN OR ANIMAL CONSUMPTION.

For Reference Only