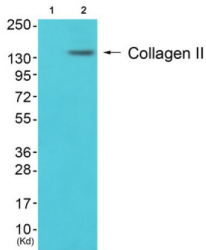
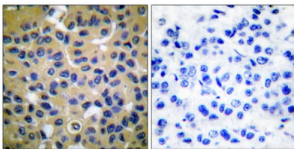


Collagen Type II (COL2) Antibody

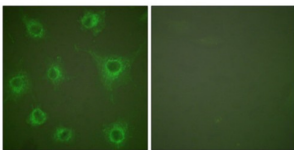
Catalogue No.: abx013043



Western blot analysis of extracts from 3T3 cells (Lane 2), using COL2 Antibody. The lane on the left is treated with synthesized peptide.



Immunohistochemical analysis of paraffin-embedded human breast carcinoma tissue, using COL2 antibody (abx013043).



Immunofluorescence analysis of COS7 cells, using COL2 antibody (abx013043).

Rabbit polyclonal antibody against COL2 protein. Immunogen region is N-terminal.

Target: Collagen Type II (COL2)

Clonality: Polyclonal

Reactivity: Human, Mouse, Rat

Tested Applications: ELISA, WB, IHC, IF/ICC

Host: Rabbit

Recommended dilutions: WB: 1/500 - 1/3000, IHC: 1/50 - 1/100, IF/ICC: 1/100 - 1/500, ELISA: 1/20000. Optimal dilutions/concentrations should be determined by the end user.

Conjugation: Unconjugated

Datasheet

Version: 4.0.0
Revision date: 17 Feb 2025



Immunogen:	The antiserum was produced against synthesized peptide derived from N-terminal of human Collagen II.
Isotype:	IgG
Form:	Liquid
Purification:	Purified from rabbit antiserum by affinity chromatography using epitope-specific immunogen.
Storage:	Aliquot and store at -20°C. Avoid repeated freeze/thaw cycles.
UniProt Primary AC:	P02458 (UniProt , ExPASy)
Sequence:	CPRGDRGDKGEKGA
Buffer:	PBS (without Mg ²⁺ and Ca ²⁺), pH 7.4, 150 mM NaCl, 0.02% sodium azide, 50% glycerol.
Concentration:	1 mg/ml
Note:	This product is for research use only.

For Reference Only