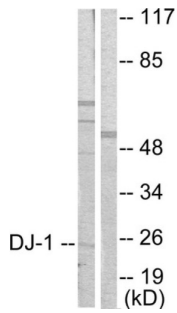
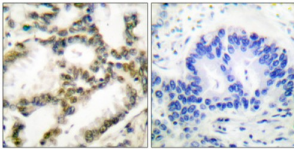


## Protein DJ-1 (DJ-1) Antibody

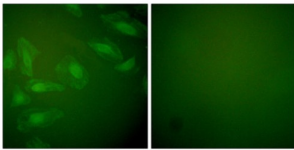
Catalogue No.: abx013059



Western blot analysis of extracts from HuvEc cells, using DJ-1 antibody (abx013059).



Immunohistochemical analysis of paraffin-embedded human lung carcinoma tissue using DJ-1 antibody (abx013059).



Immunofluorescence analysis of HeLa cells, using DJ-1 antibody (abx013059).

Rabbit polyclonal antibody against DJ-1 protein. Immunogen region is Internal.

**Target:** Protein DJ-1 (DJ-1)

**Clonality:** Polyclonal

**Reactivity:** Human, Mouse

**Tested Applications:** ELISA, WB, IHC, IF/ICC

**Host:** Rabbit

**Recommended dilutions:** WB: 1/500 - 1/3000, IHC: 1/50 - 1/100, IF/ICC: 1/500 - 1/3000, ELISA: 1/10000. Optimal dilutions/concentrations should be determined by the end user.

**Conjugation:** Unconjugated

# Datasheet

Version: 7.0.0  
Revision date: 04 Dec 2024



<b>Immunogen:</b>	The antiserum was produced against synthesized peptide derived from internal of human DJ-1.
<b>Isotype:</b>	IgG
<b>Form:</b>	Liquid
<b>Purification:</b>	Purified from rabbit antiserum by affinity chromatography using epitope-specific immunogen.
<b>Storage:</b>	Aliquot and store at -20°C. Avoid repeated freeze/thaw cycles.
<b>UniProt Primary AC:</b>	Q99497 ( <a href="#">UniProt</a> , <a href="#">ExPASy</a> )
<b>Sequence:</b>	CPDASLED AKKEGPYD
<b>Buffer:</b>	PBS (without Mg <sup>2+</sup> and Ca <sup>2+</sup> ), pH 7.4, 150 mM NaCl, 0.02% sodium azide, 50% glycerol.
<b>Concentration:</b>	1 mg/ml
<b>Note:</b>	This product is for research use only.

For Reference Only