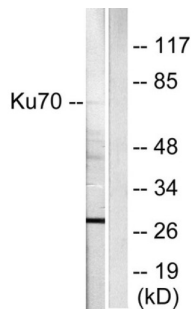
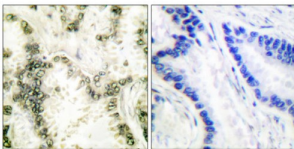


X-Ray Repair Cross-Complementing Protein 6 (XRCC6) Antibody

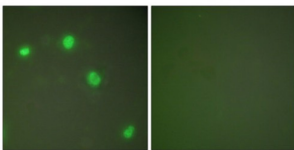
Catalogue No.: abx013132



Western blot analysis of extracts from HepG2 cells, using Ku70 antibody (abx013132). The lane on the right is treated with synthetic peptide.



Immunohistochemical analysis of paraffin-embedded human lung carcinoma tissue, using Ku70 antibody (abx013132). The image on the right is treated with synthetic peptide.



Immunofluorescence analysis of COS7 cells, using Ku70 antibody (abx013132). The image on the right is treated with synthetic peptide.

Rabbit polyclonal antibody against X-Ray Repair Cross-Complementing Protein 6 (XRCC6) protein. Immunogen region is C-terminal.

Target: X-Ray Repair Cross-Complementing Protein 6 (XRCC6)

Clonality: Polyclonal

Reactivity: Human, Mouse, Rat

Tested Applications: ELISA, WB, IHC, IF/ICC

Host: Rabbit

Recommended dilutions: ELISA: 1/10000, WB: 1/500 - 1/3000, IHC: 1/50 - 1/100, IF/ICC: 1/100 - 1/500. Optimal dilutions/concentrations should be determined by the end user.

Datasheet

Version: 3.0.0
Revision date: 16 Apr 2025



Conjugation:	Unconjugated
Immunogen:	The antiserum was produced against synthesized peptide derived from human Ku70.
Isotype:	IgG
Form:	Liquid
Purification:	Purified from rabbit antiserum by affinity chromatography using epitope-specific immunogen.
Storage:	Aliquot and store at -20°C. Avoid repeated freeze/thaw cycles.
UniProt Primary AC:	P12956 (UniProt , ExPASy)
KEGG:	hsa:2547
String:	9606.ENSP00000352257
Sequence:	CRAYGLKSGGLKKQELLEALT
Buffer:	PBS (without Mg ²⁺ and Ca ²⁺), pH 7.4, 150 mM NaCl, 0.02% sodium azide, 50% glycerol.
Specificity:	Detects endogeneous levels of total Ku70 protein.
Concentration:	1 mg/ml
Note:	THIS PRODUCT IS FOR RESEARCH USE ONLY. NOT FOR USE IN DIAGNOSTIC, THERAPEUTIC OR COSMETIC PROCEDURES. NOT FOR HUMAN OR ANIMAL CONSUMPTION.

For Reference Only