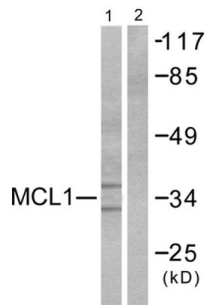
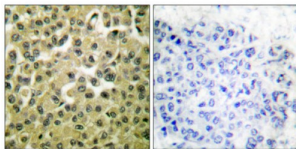


Induced Myeloid Leukemia Cell Differentiation Protein (MCL1) Antibody

Catalogue No.: abx013136



Western blot analysis of extracts from HuvEc cells, using MCL1 antibody (abx013136).



Immunohistochemical analysis of paraffin-embedded human breast carcinoma tissue, using MCL1 antibody (abx013136).

Rabbit polyclonal antibody against MCL1 protein. Immunogen region is Internal.

Target:	Induced Myeloid Leukemia Cell Differentiation Protein (MCL1)
Clonality:	Polyclonal
Reactivity:	Human, Mouse, Rat
Tested Applications:	ELISA, WB, IHC
Host:	Rabbit
Recommended dilutions:	WB: 1/500 - 1/3000, IHC: 1/50 - 1/100, ELISA: 1/40000. Optimal dilutions/concentrations should be determined by the end user.
Conjugation:	Unconjugated
Immunogen:	The antiserum was produced against synthesized peptide derived from internal of human MCL1.
Isotype:	IgG
Form:	Liquid
Purification:	Purified from rabbit antiserum by affinity chromatography using epitope-specific immunogen.

Datasheet

Version: 2.0.0
Revision date: 03 Dec 2024



Storage: Aliquot and store at -20°C. Avoid repeated freeze/thaw cycles.

UniProt Primary AC: Q07820 ([UniProt](#), [ExPASy](#))

KEGG: hsa:4170

String: [9606.ENSP00000358022](#)

Sequence: CSPEEELDGYEPEPLGKRPV

Buffer: PBS (without Mg²⁺ and Ca²⁺), pH 7.4, 150 mM NaCl, 0.02% sodium azide, 50% glycerol.

Concentration: 1 mg/ml

Note: This product is for research use only.

For Reference Only