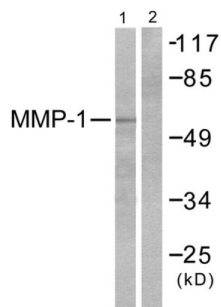


## Matrix Metalloproteinase 1 (MMP1) Antibody

Catalogue No.: abx013140



Western blot analysis of extracts from HepG2 cells, using MMP-1 antibody (abx013140).

Rabbit polyclonal antibody against MMP-1 protein.

<b>Target:</b>	Matrix Metalloproteinase 1 (MMP1)
<b>Clonality:</b>	Polyclonal
<b>Reactivity:</b>	Human
<b>Tested Applications:</b>	ELISA, WB
<b>Host:</b>	Rabbit
<b>Recommended dilutions:</b>	WB: 1/500 - 1/3000, ELISA: 1/20000. Optimal dilutions/concentrations should be determined by the end user.
<b>Conjugation:</b>	Unconjugated
<b>Immunogen:</b>	The antiserum was produced against synthesized peptide derived from human MMP-1.
<b>Isotype:</b>	IgG
<b>Form:</b>	Liquid
<b>Purification:</b>	Purified from rabbit antiserum by affinity chromatography using epitope-specific immunogen.
<b>Storage:</b>	Aliquot and store at -20°C. Avoid repeated freeze/thaw cycles.
<b>UniProt Primary AC:</b>	P03956 ( <a href="#">UniProt</a> , <a href="#">ExPASy</a> )
<b>KEGG:</b>	hsa:4312
<b>String:</b>	<a href="#">9606.ENSP00000322788</a>

# Datasheet

Version: 2.0.0

Revision date: 06 Oct 2024



---

<b>Buffer:</b>	PBS (without $Mg^{2+}$ and $Ca^{2+}$ ), pH 7.4, 150 mM NaCl, 0.02% sodium azide, 50% glycerol.
<b>Specificity:</b>	Detects endogenous levels of total MMP-1 protein.
<b>Concentration:</b>	1 mg/ml
<b>Note:</b>	This product is for research use only.

For Reference Only