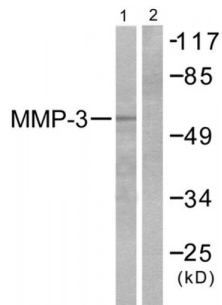
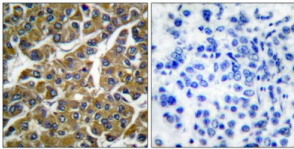


Matrix Metalloproteinase 3 / Stromelysin-1 (MMP3) Antibody

Catalogue No.: abx013149



Western blot analysis of extracts from 293 cells, using MMP3 antibody (abx013149).



Immunohistochemical analysis of paraffin-embedded human breast carcinoma tissue, using MMP3 antibody (abx013149).

Rabbit polyclonal antibody against MMP3 protein. Immunogen region is C-terminal.

Target:	Matrix Metalloproteinase 3 / Stromelysin-1 (MMP3)
Clonality:	Polyclonal
Reactivity:	Human, Mouse, Rat
Tested Applications:	ELISA, WB, IHC
Host:	Rabbit
Recommended dilutions:	WB: 1/500 - 1/3000, IHC: 1/50 - 1/100, ELISA: 1/10000. Optimal dilutions/concentrations should be determined by the end user.
Conjugation:	Unconjugated
Immunogen:	The antiserum was produced against synthesized peptide derived from C-terminal of human MMP-3.
Isotype:	IgG
Form:	Liquid
Purification:	Purified from rabbit antiserum by affinity chromatography using epitope-specific immunogen.

Datasheet

Version: 1.0.0
Revision date: 27 Jul 2024



Storage:	Aliquot and store at -20°C. Avoid repeated freeze/thaw cycles.
UniProt Primary AC:	P08254 (UniProt , ExPASy)
KEGG:	hsa:4314
String:	9606.ENSP00000299855
Enzyme Commission Number:	EC 3.4.24.17, EC 3.4.24
Sequence:	CSSQLEFDPNAKKVTHTLK
Buffer:	PBS (without Mg ²⁺ and Ca ²⁺), pH 7.4, 150 mM NaCl, 0.02% sodium azide, 50% glycerol.
Concentration:	1 mg/ml
Note:	This product is for research use only.

For Reference Only