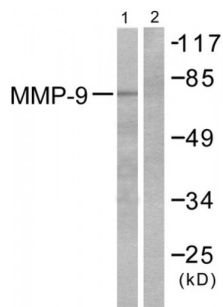
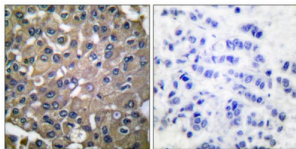


Matrix Metalloproteinase-9 (MMP9) Antibody

Catalogue No.: abx013152



Western blot analysis of extracts from HepG2 cells, using MMP9 antibody (abx013152).



Immunohistochemical analysis of paraffin-embedded human breast carcinoma tissue, using MMP9 antibody (abx013152).

Rabbit polyclonal antibody against MMP9 protein. Immunogen region is C-terminal.

Target:	Matrix Metalloproteinase-9 (MMP9)
Clonality:	Polyclonal
Reactivity:	Human
Tested Applications:	ELISA, WB, IHC
Host:	Rabbit
Recommended dilutions:	WB: 1/500 - 1/3000, IHC: 1/50 - 1/100, ELISA: 1/5000. Optimal dilutions/concentrations should be determined by the end user.
Conjugation:	Unconjugated
Immunogen:	The antiserum was produced against synthesized peptide derived from C-terminal of human MMP-9.
Isotype:	IgG
Form:	Liquid
Purification:	Purified from rabbit antiserum by affinity chromatography using epitope-specific immunogen.

Datasheet

Version: 1.0.0
Revision date: 15 Aug 2024



Storage: Aliquot and store at -20°C. Avoid repeated freeze/thaw cycles.

UniProt Primary AC: P14780 ([UniProt](#), [ExPASy](#))

KEGG: hsa:4318

String: [9606.ENSP00000361405](#)

Enzyme Commission Number: EC 3.4.24, EC 3.4.24.35

Sequence: CWRVSSRSELNQVDQ

Buffer: PBS (without Mg²⁺ and Ca²⁺), pH 7.4, 150 mM NaCl, 0.02% sodium azide, 50% glycerol.

Concentration: 1 mg/ml

Note: This product is for research use only.

For Reference Only