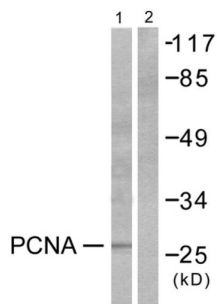
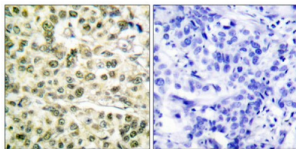


## Proliferating Cell Nuclear Antigen (PCNA) Antibody

Catalogue No.: abx013174



Western blot analysis of extracts from HepG2 cells, using PCNA antibody (abx013174).



Immunohistochemical analysis of paraffin-embedded human breast carcinoma tissue, using PCNA antibody (abx013174).

Rabbit polyclonal antibody against PCNA protein. Immunogen region is Internal.

<b>Target:</b>	Proliferating Cell Nuclear Antigen (PCNA)
<b>Clonality:</b>	Polyclonal
<b>Reactivity:</b>	Human, Mouse, Rat
<b>Tested Applications:</b>	ELISA, WB, IHC
<b>Host:</b>	Rabbit
<b>Recommended dilutions:</b>	WB: 1/500 - 1/3000, IHC: 1/50 - 1/100, ELISA: 1/5000. Optimal dilutions/concentrations should be determined by the end user.
<b>Conjugation:</b>	Unconjugated
<b>Immunogen:</b>	The antiserum was produced against a synthesized peptide derived from the internal region of human PCNA.
<b>Isotype:</b>	IgG
<b>Form:</b>	Liquid
<b>Purification:</b>	Purified from rabbit antiserum by affinity chromatography using epitope-specific immunogen.

# Datasheet

Version: 3.0.0  
Revision date: 03 Jan 2025



**Storage:** Aliquot and store at -20°C. Avoid repeated freeze/thaw cycles.

**UniProt Primary AC:** P12004 ([UniProt](#), [ExPASy](#))

**KEGG:** hsa:5111

**String:** [9606.ENSP00000368458](#)

**Sequence:** CITLRAEDNADTLAL

**Buffer:** PBS (without Mg<sup>2+</sup> and Ca<sup>2+</sup>), pH 7.4, 150 mM NaCl, 0.02% sodium azide, 50% glycerol.

**Concentration:** 1 mg/ml

**Note:** This product is for research use only.

For Reference Only