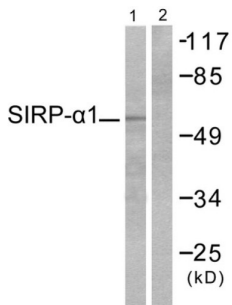
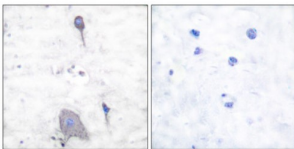


Sirp alpha 1 Antibody

Catalogue No.: abx013193



Western blot analysis of extracts from HepG2 cells, using Sirp alpha 1 antibody (abx013193).



Immunohistochemical analysis of paraffin-embedded human brain tissue, using Sirp alpha 1 antibody (abx013193).

Rabbit polyclonal antibody against Sirp alpha 1 protein. Immunogen region is C-terminal.

Target:	Sirp alpha 1
Clonality:	Polyclonal
Reactivity:	Human, Mouse, Rat
Tested Applications:	ELISA, WB, IHC
Host:	Rabbit
Recommended dilutions:	WB: 1/500 - 1/3000, IHC: 1/50 - 1/100, ELISA: 1/20000. Optimal dilutions/concentrations should be determined by the end user.
Conjugation:	Unconjugated
Immunogen:	The antiserum was produced against synthesized peptide derived from C-terminal of human SIRP-alpha1.
Isotype:	IgG
Form:	Liquid
Purification:	Purified from rabbit antiserum by affinity chromatography using epitope-specific immunogen.

Datasheet

Version: 3.0.0

Revision date: 06 Mar 2025



Storage:	Aliquot and store at -20°C. Avoid repeated freeze/thaw cycles.
UniProt Primary AC:	P78324 (UniProt , ExPASy)
KEGG:	hsa:140885
String:	9606.ENSP00000382941
Sequence:	CRTPKQPAPKPEPSFSEY
Buffer:	PBS (without Mg ²⁺ and Ca ²⁺), pH 7.4, 150 mM NaCl, 0.02% sodium azide, 50% glycerol.
Concentration:	1 mg/ml
Note:	THIS PRODUCT IS FOR RESEARCH USE ONLY. NOT FOR USE IN DIAGNOSTIC, THERAPEUTIC OR COSMETIC PROCEDURES. NOT FOR HUMAN OR ANIMAL CONSUMPTION.

For Reference Only