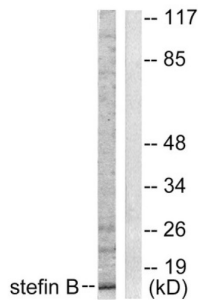
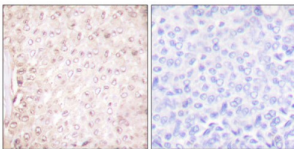


Stefin B (STFB) Antibody

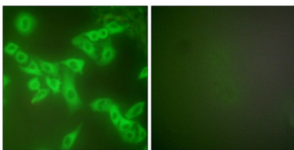
Catalogue No.: abx013197



Western blot analysis of extracts from A549 cells, using Stefin B antibody (abx013197).



Immunohistochemical analysis of paraffin-embedded human breast carcinoma tissue using Stefin B antibody (abx013197).



Immunofluorescence analysis of A549 cells, using Stefin B antibody (abx013197).

Rabbit polyclonal antibody against Stefin B protein. Immunogen region is Internal.

Target: Stefin B (STFB)

Clonality: Polyclonal

Reactivity: Human, Rat

Tested Applications: ELISA, WB, IHC, IF/ICC

Host: Rabbit

Recommended dilutions: WB: 1/500 - 1/3000, IHC: 1/50 - 1/100, IF/ICC: 1/100 - 1/500, ELISA: 1/20000. Optimal dilutions/concentrations should be determined by the end user.

Conjugation: Unconjugated

Datasheet

Version: 3.0.0
Revision date: 02 Feb 2025



Immunogen:	The antiserum was produced against synthesized peptide derived from internal of human stefin B.
Isotype:	IgG
Form:	Liquid
Purification:	Purified from rabbit antiserum by affinity chromatography using epitope-specific immunogen.
Storage:	Aliquot and store at -20°C. Avoid repeated freeze/thaw cycles.
UniProt Primary AC:	P04080 (UniProt , ExpASY)
KEGG:	hsa:1476
String:	9606.ENSP00000291568
Sequence:	CNYQTNKAKHDELTYP
Buffer:	PBS (without Mg ²⁺ and Ca ²⁺), pH 7.4, 150 mM NaCl, 0.02% sodium azide, 50% glycerol.
Concentration:	1 mg/ml
Note:	This product is for research use only.

For Reference Only