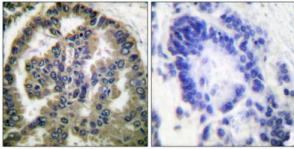


Transforming Growth Factor Beta-2 (TGFB2) Antibody

Catalogue No.: abx013205



Immunohistochemical analysis of paraffin-embedded human lung carcinoma tissue, using TGF beta 2 antibody.

Rabbit polyclonal antibody against TGF beta 2 protein. Immunogen region is C-terminal.

| | |
|-------------------------------|--|
| Target: | Transforming Growth Factor Beta-2 (TGFB2) |
| Clonality: | Polyclonal |
| Reactivity: | Human, Mouse, Rat |
| Tested Applications: | ELISA, IHC |
| Host: | Rabbit |
| Recommended dilutions: | IHC: 1/50 - 1/100, ELISA: 1/5000. Optimal dilutions/concentrations should be determined by the end user. |
| Conjugation: | Unconjugated |
| Immunogen: | The antiserum was produced against synthesized peptide derived from C-terminal of human TGF beta 2. |
| Isotype: | IgG |
| Form: | Liquid |
| Purification: | Purified from rabbit antiserum by affinity chromatography using epitope-specific immunogen. |
| Storage: | Aliquot and store at -20°C. Avoid repeated freeze/thaw cycles. |
| UniProt Primary AC: | P61812 (UniProt , ExpASY) |
| KEGG: | hsa:7042 |
| String: | 9606.ENSP00000355896 |

Datasheet

Version: 1.0.0

Revision date: 02 Dec 2024



Sequence: CLTILYYIGKTPKIEQLSNMI

Buffer: PBS (without Mg^{2+} and Ca^{2+}), pH 7.4, 150 mM NaCl, 0.02% sodium azide, 50% glycerol.

Concentration: 1 mg/ml

Note: This product is for research use only.

For Reference Only