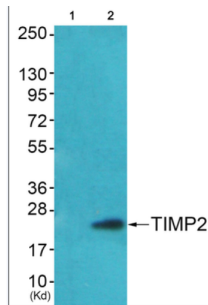
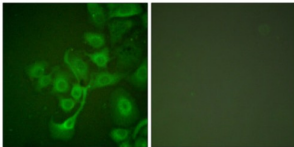


## Metalloproteinase Inhibitor 2 (TIMP2) Antibody

Catalogue No.: abx013211



Western blot analysis of extracts from HepG2 cells (Lane 2), using TIMP2 Antibody. The lane on the left is treated with synthesized peptide.



Immunofluorescence analysis of A549 cells, using TIMP2 antibody (abx013211).

Rabbit polyclonal antibody against TIMP2 protein. Immunogen region is Internal.

<b>Target:</b>	Metalloproteinase Inhibitor 2 (TIMP2)
<b>Clonality:</b>	Polyclonal
<b>Reactivity:</b>	Human, Mouse, Rat
<b>Tested Applications:</b>	ELISA, WB, IF/ICC
<b>Host:</b>	Rabbit
<b>Recommended dilutions:</b>	WB: 1/500 - 1/3000, IF/ICC: 1/100 - 1/500, ELISA: 1/40000. Optimal dilutions/concentrations should be determined by the end user.
<b>Conjugation:</b>	Unconjugated
<b>Immunogen:</b>	The antiserum was produced against synthesized peptide derived from internal of human TIMP2.
<b>Isotype:</b>	IgG
<b>Form:</b>	Liquid
<b>Purification:</b>	Purified from rabbit antiserum by affinity chromatography using epitope-specific immunogen.

# Datasheet

Version: 2.0.0

Revision date: 02 Dec 2024



**Storage:** Aliquot and store at -20°C. Avoid repeated freeze/thaw cycles.

**UniProt Primary AC:** P16035 ([UniProt](#), [ExPASy](#))

**KEGG:** hsa:7077

**String:** [9606.ENSP00000262768](#)

**Buffer:** PBS (without Mg<sup>2+</sup> and Ca<sup>2+</sup>), pH 7.4, 150 mM NaCl, 0.02% sodium azide, 50% glycerol.

**Concentration:** 1 mg/ml

**Note:** This product is for research use only.

For Reference Only