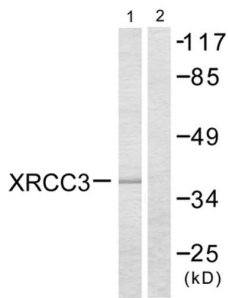
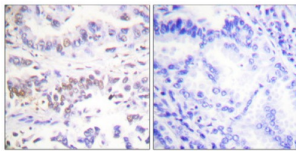


X-Ray Repair Cross Complementing 3 (XRCC3) Antibody

Catalogue No.: abx013256



Western blot analysis of extracts from HepG2 cells, treated with Adriamycin (0.5uM, 5hours), using XRCC3 antibody.



Immunohistochemistry analysis of paraffin-embedded human lung carcinoma tissue using XRCC3 antibody.

Rabbit polyclonal antibody against XRCC3 protein. Immunogen region is Internal.

Target:	X-Ray Repair Cross Complementing 3 (XRCC3)
Clonality:	Polyclonal
Reactivity:	Human
Tested Applications:	ELISA, WB, IHC
Host:	Rabbit
Recommended dilutions:	WB: 1/500 - 1/3000, IHC: 1/50 - 1/100, ELISA: 1/5000. Optimal dilutions/concentrations should be determined by the end user.
Conjugation:	Unconjugated
Immunogen:	The antiserum was produced against synthesized peptide derived from Internal of human XRCC3.
Isotype:	IgG
Form:	Liquid
Purification:	Purified from rabbit antiserum by affinity chromatography using epitope-specific immunogen.

Datasheet

Version: 1.0.0
Revision date: 25 Nov 2024



Storage:	Aliquot and store at -20°C. Avoid repeated freeze/thaw cycles.
UniProt Primary AC:	O43542 (UniProt , ExPASy)
KEGG:	hsa:7517
String:	9606.ENSP00000451974
Sequence:	CQLHQQKERFPTQHQR
Buffer:	PBS (without Mg ²⁺ and Ca ²⁺), pH 7.4, 150 mM NaCl, 0.02% sodium azide, 50% glycerol.
Concentration:	1 mg/ml
Note:	This product is for research use only.

For Reference Only