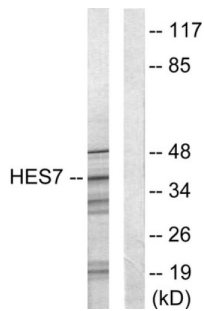
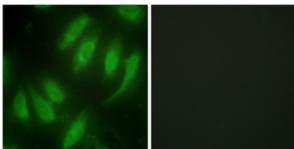


Protein HEXIM1 (HEXIM1) Antibody

Catalogue No.: abx013333



Western blot analysis of extracts from NIH-3T3 cells, using HES7 antibody.



Immunofluorescence analysis of HeLa cells, using HES7 antibody.

Rabbit polyclonal antibody against HEXIM1 protein. Immunogen region is Internal.

Target:	Protein HEXIM1 (HEXIM1)
Clonality:	Polyclonal
Reactivity:	Human, Mouse, Rat
Tested Applications:	ELISA, WB, IF/ICC
Host:	Rabbit
Recommended dilutions:	WB: 1/500 - 1/3000, IF/ICC: 1/100 - 1/500, ELISA: 1/10000. Optimal dilutions/concentrations should be determined by the end user.
Conjugation:	Unconjugated
Immunogen:	The antiserum was produced against synthesized peptide derived from Internal of human HES7.
Isotype:	IgG
Form:	Liquid
Purification:	Purified from rabbit antiserum by affinity chromatography using epitope-specific immunogen.

Datasheet

Version: 3.0.0
Revision date: 13 Mar 2025



Storage: Aliquot and store at -20°C. Avoid repeated freeze/thaw cycles.

UniProt Primary AC: O94992 ([UniProt](#), [ExPASy](#))

KEGG: hsa:10614

String: [9606.ENSP00000328773](#)

Buffer: PBS (without Mg²⁺ and Ca²⁺), pH 7.4, 150 mM NaCl, 0.02% sodium azide, 50% glycerol.

Concentration: 1 mg/ml

Note: THIS PRODUCT IS FOR RESEARCH USE ONLY. NOT FOR USE IN DIAGNOSTIC, THERAPEUTIC OR COSMETIC PROCEDURES. NOT FOR HUMAN OR ANIMAL CONSUMPTION.

For Reference Only