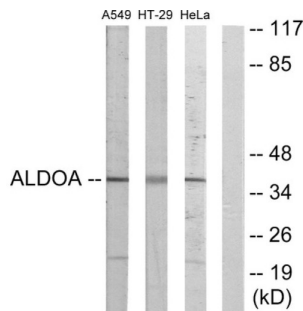


Fructose-Bisphosphate Aldolase A (ALDOA) Antibody

Catalogue No.: abx013358



Western blot analysis of extracts from A549 cells, HT-29 cells and HeLa cells, using ALDOA antibody.

Rabbit polyclonal antibody against ALDOA protein. Immunogen region is N-terminal.

Target:	Fructose-Bisphosphate Aldolase A (ALDOA)
Clonality:	Polyclonal
Reactivity:	Human, Mouse, Rat
Tested Applications:	ELISA, WB
Host:	Rabbit
Recommended dilutions:	WB: 1/500 - 1/3000, ELISA: 1/10000. Optimal dilutions/concentrations should be determined by the end user.
Conjugation:	Unconjugated
Immunogen:	The antiserum was produced against synthesized peptide derived from the N-terminal region of human ALDOA.
Isotype:	IgG
Form:	Liquid
Purification:	Purified from rabbit antiserum by affinity chromatography using epitope-specific immunogen.
Storage:	Aliquot and store at -20°C. Avoid repeated freeze/thaw cycles.
UniProt Primary AC:	P04075 (UniProt , ExPASy)
Gene Symbol:	ALDOA
GeneID:	226

Datasheet

Version: 1.0.0
Revision date: 09 Nov 2024



OMIM: [103850](#)

HGNC: 414

KEGG: hsa:226

Ensembl: ENSG00000149925

String: [9606.ENSP00000378669](#)

Enzyme Commission Number: EC 4.1.2.13

Buffer: PBS (without Mg^{2+} and Ca^{2+}), pH 7.4, 150 mM NaCl, 0.02% sodium azide, 50% glycerol.

Specificity: Detects endogenous levels of total ALDOA protein.

Concentration: 1 mg/ml

Note: This product is for research use only.

For Reference Only