

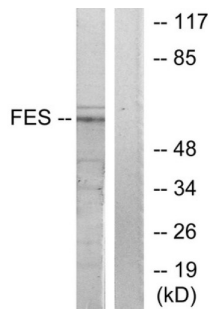
Datasheet

Version: 2.0.0
Revision date: 28 Nov 2024



Feline Sarcoma Oncogene (FES) Antibody

Catalogue No.: abx013365



Western blot analysis of extracts from HUVEC cells, treated with serum (20%, 30mins), using FES antibody.

Rabbit polyclonal antibody against FES protein. Immunogen region is Internal.

Target:	Feline Sarcoma Oncogene (FES)
Clonality:	Polyclonal
Reactivity:	Human, Mouse
Tested Applications:	ELISA, WB
Host:	Rabbit
Recommended dilutions:	WB: 1/500 - 1/3000, ELISA: 1/5000. Optimal dilutions/concentrations should be determined by the end user.
Conjugation:	Unconjugated
Immunogen:	The antiserum was produced against synthesized peptide derived from internal of human FES.
Isotype:	IgG
Form:	Liquid
Purification:	Purified from rabbit antiserum by affinity chromatography using epitope-specific immunogen.
Storage:	Aliquot and store at -20°C. Avoid repeated freeze/thaw cycles.
UniProt Primary AC:	P07332 (UniProt , ExPASy)
Enzyme Commission Number:	EC 2.7.10.2
Buffer:	PBS (without Mg ²⁺ and Ca ²⁺), pH 7.4, 150 mM NaCl, 0.02% sodium azide, 50% glycerol.

Datasheet

Version: 2.0.0

Revision date: 28 Nov 2024



Concentration: 1 mg/ml

Note: This product is for research use only.

For Reference Only