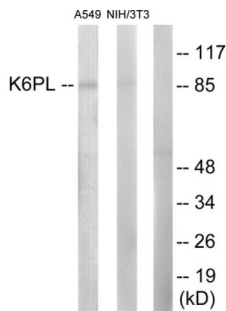


ATP-Dependent 6-Phosphofructokinase, Liver Type (PFKL) Antibody

Catalogue No.: abx013411



Western blot analysis of extracts from A549 cells and NIH-3T3 cells, using K6PL antibody.

Rabbit polyclonal antibody against K6PL protein. Immunogen region is C-terminal.

Target:	ATP-Dependent 6-Phosphofructokinase, Liver Type (PFKL)
Clonality:	Polyclonal
Reactivity:	Human, Mouse, Rat
Tested Applications:	ELISA, WB
Host:	Rabbit
Recommended dilutions:	WB: 1/500 - 1/3000, ELISA: 1/20000. Optimal dilutions/concentrations should be determined by the end user.
Conjugation:	Unconjugated
Immunogen:	The antiserum was produced against synthesized peptide derived from C-terminal of human K6PL.
Isotype:	IgG
Form:	Liquid
Purification:	Purified from rabbit antiserum by affinity chromatography using epitope-specific immunogen.
Storage:	Aliquot and store at -20°C. Avoid repeated freeze/thaw cycles.
UniProt Primary AC:	P17858 (UniProt , ExPASy)
KEGG:	hsa:5211
String:	9606.ENSP00000269848

Datasheet

Version: 4.0.0

Revision date: 21 Sep 2024



Enzyme Commission Number: EC 2.7.1.11

Buffer: PBS (without Mg^{2+} and Ca^{2+}), pH 7.4, 150 mM NaCl, 0.02% sodium azide, 50% glycerol.

Concentration: 1 mg/ml

Note: This product is for research use only.

For Reference Only