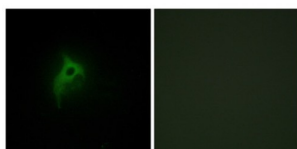


Adrenergic Receptor Alpha 2B (ADRA2B) Antibody

Catalogue No.: abx013413



Immunofluorescence analysis of HepG2 cells, using Adrenergic Receptor alpha -2B antibody.

Rabbit polyclonal antibody against Adrenergic Receptor alpha 2B protein. Immunogen region is Internal.

Target:	Adrenergic Receptor Alpha 2B (ADRA2B)
Clonality:	Polyclonal
Reactivity:	Human
Tested Applications:	ELISA, IF/ICC
Host:	Rabbit
Recommended dilutions:	IF/ICC: 1/100 - 1/500, ELISA: 1/10000. Optimal dilutions/concentrations should be determined by the end user.
Conjugation:	Unconjugated
Immunogen:	The antiserum was produced against synthesized peptide derived from internal of human Adrenergic Receptor alpha 2B.
Isotype:	IgG
Form:	Liquid
Purification:	Purified from rabbit antiserum by affinity chromatography using epitope-specific immunogen.
Storage:	Aliquot and store at -20°C. Avoid repeated freeze/thaw cycles.
UniProt Primary AC:	P18089 (UniProt , ExpASY)
KEGG:	hsa:151
String:	9606.ENSP00000480573

Datasheet

Version: 3.0.0

Revision date: 03 Dec 2024



Buffer: PBS (without Mg^{2+} and Ca^{2+}), pH 7.4, 150 mM NaCl, 0.02% sodium azide, 50% glycerol.

Concentration: 1 mg/ml

Note: This product is for research use only.

For Reference Only