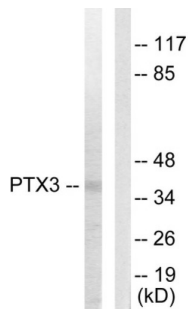
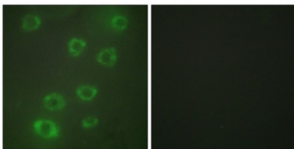


Pentraxin 3 (PTX3) Antibody

Catalogue No.: abx013442



Western blot analysis of extracts from 293 cells, using Pentraxin 3 antibody.



Immunofluorescence analysis of HUVEC cells, using Pentraxin 3 antibody.

Rabbit polyclonal antibody against Pentraxin 3 protein. Immunogen region is N-terminal.

Target:	Pentraxin 3 (PTX3)
Clonality:	Polyclonal
Reactivity:	Human, Mouse
Tested Applications:	ELISA, WB, IF/ICC
Host:	Rabbit
Recommended dilutions:	WB: 1/500 - 1/3000, IF/ICC: 1/100 - 1/500, ELISA: 1/10000. Optimal dilutions/concentrations should be determined by the end user.
Conjugation:	Unconjugated
Immunogen:	The antiserum was produced against synthesized peptide derived from N-terminal of human PTX3.
Isotype:	IgG
Form:	Liquid
Purification:	Purified from rabbit antiserum by affinity chromatography using epitope-specific immunogen.

Datasheet

Version: 2.0.0
Revision date: 08 Nov 2024



Storage:	Aliquot and store at -20°C. Avoid repeated freeze/thaw cycles.
UniProt Primary AC:	P26022 (UniProt , ExPASy)
Gene Symbol:	PTX3
GeneID:	5806
OMIM:	602492
HGNC:	9692
KEGG:	hsa:5806
Ensembl:	ENSG00000163661
String:	9606.ENSP00000295927
Buffer:	PBS (without Mg ²⁺ and Ca ²⁺), pH 7.4, 150 mM NaCl, 0.02% sodium azide, 50% glycerol.
Concentration:	1 mg/ml
Note:	This product is for research use only.

For Reference Only